



DISC TUMBLER SERIES

BOA SECURITY TECHNOLOGIES, INC.

Located in Huntington, New York, we originally established our business in 1997 under the name of BOA Handcuff Company, Inc. At that time our business focus was solely our patented High Security Handcuffs for Correctional Facilities worldwide. In 2014 we rebranded our company and began competing for business in the area we all knew best; Retail Cabinet and Showcase Locks. However, we are much more than just a manufacturer, distributor or service provider. We are integrators. We find the best product or mix of products to find solutions for our customers. We take pride in what we do and who we do it for. We do not work on excessive margins as many of our competitors. We work on smaller margins, do a great job and have built our business accordingly. We service some of the best and biggest retailers and correctional facilities in the world and would be proud to add you to our list of happy clients.

WHAT:

Specialized Manufacturer, Distributor and Field Service Provider of Locks used by Retailers for both their showcases as well as interior and perimeter doors.

WHY:

We will save you money and ensure your security via a diversified vendor base with equivalent if not better products and services.

WHERE:

BOA services our clients all through the United States and Canada.

WHEN:

Typical lead times for orders are 7-10 days after receipt of order. Typical response times to “request for service” are within 24 hours. If you require faster service, just tell us so.

Ramp up Time for transferring business to BOA from current vendor is 45 days for BOA to prepare component inventory to meet your immediate needs.

HOW:

Utilizing our extensive inventory of components (either manufactured by us or simply distributed by us), we provide showcase locks and door hardware that meet your specific needs for plug and play replacement or new installations. In addition, our Field Service Tech’s are ready to go at a moment’s notice anywhere throughout the U.S. and Canada. Just send us an email and we will take the issue off your plate.

GENERAL INFORMATION

Standard Plating Finish



PN
Polished Nickel

Special Plating Finishes

(Extended lead-time and plating lot charges may apply)



SN
Satin Nickel



PB
Polished Brass



SB
Satin Brass



BL
Matte Black



ST
Statuary Bronze

Custom Plating Finish



CF
Custom Finish

DELIVERY:

At BOA, we assemble every lock to order and strive to meet your requested in-house date. If we cannot meet your requested date, we will advise you within 24-hours of receiving your order. Our standard lead time is to ship within 10-days after receipt of your order. Rush orders and emergency services are available.

BOA's large component inventory and assemble-to-order factory enables you to order locks keyed alike, keyed differently or master keyed in groups using hundreds of key combinations. All keys are now sold separately.

PLATING:

Our standard plating finish is either Polished or Brushed Nickel; depending upon the specific product line being ordered. A wide range of special plating finishes are also available; including Satin Nickel, Polished Brass, Satin Brass, Statuary Bronze, Matte Black and Custom Finishes to match your showcase hardware. Please note: Extended lead-time and plating lot charges may apply to Special and Custom finishes. Please call us for details.

KEY CONTROL:

BOA's standard operating procedure is to request your end-user name and exact location. This enables us to maintain your key plans by store, retail department, showcase/cabinets, or office. We maintain a historical database of keying records. This gives you the ability to match key numbers of previous orders.

KEY RETAINING VS. NON-KEY RETAINING LOCK FUNCTION:

Standard high security lock operation is Key Retaining (Captive), which means that the operating key can be removed from the lock in the locked position. For lower security situations, Non-Captive key operation is the standard. This means the key is removable in both the locked and unlocked position.

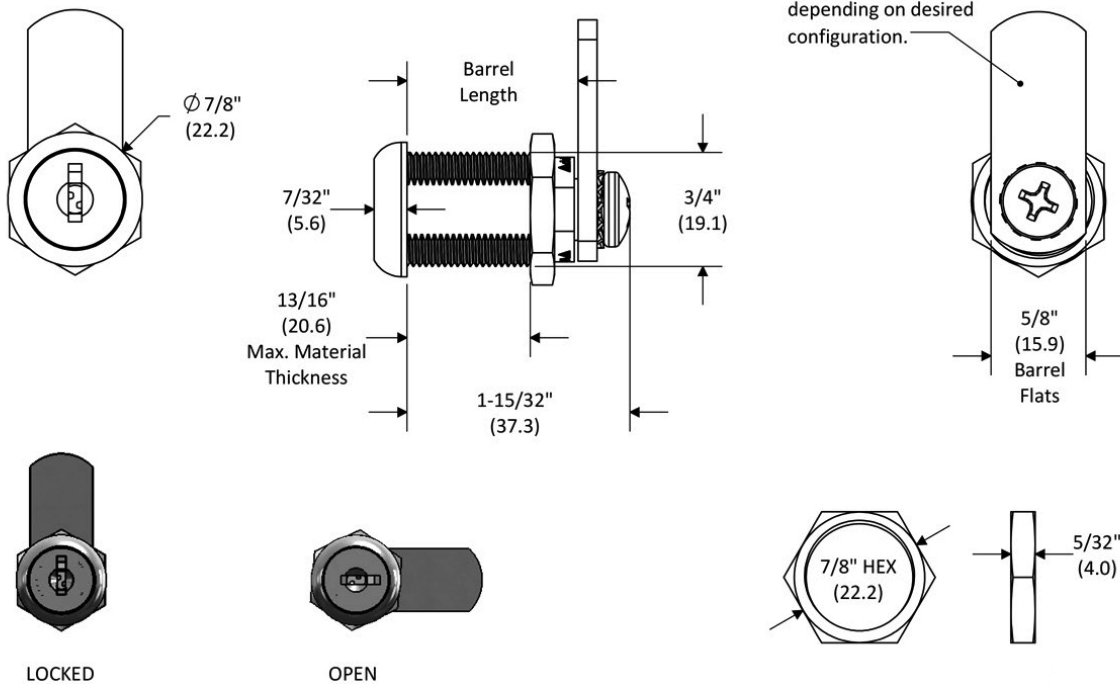
CAM LOCKS



BOA Key Removable Core Camlocks are available in the industry standard 54G Keyway with 6 tumblers. Camlocks are available in 7/8", 1-1/8", 1-3/8" and 1-3/4". Key retaining and non key retaining. Camlocks can be used on wood, metal or glass with optional accessories.

Base Part#: **CLD** XXXX XXXX XX X X X

* Parenthesis dimensions are in mm.



CLD XXXX XXXX XX X X X

XXXX = BARREL LENGTH

0875 = 7/8" Barrel length
1125 = 1-1/8" Barrel length
1375 = 1-3/8" Barrel length
1750 = 1-3/4" Barrel length

XX = METAL FINISH

PN = Polished Nickel (Standard)
SN = Satin Nickel
BL = Black

XXXX = CAM ROTATION

90° Clockwise
1203 = 12 – 03 O'clock
0306 = 03 – 06 O'clock
0906 = 06 – 09 O'clock
0912 = 09 – 12 O'clock

90° Counter-Clockwise
1209 = 12 – 09 O'clock
0906 = 09 – 06 O'clock
0603 = 06 – 03 O'clock
0312 = 03 – 12 O'clock

X = STAMP LOCK

S = Stamp lockface or lock (Standard)
B = Blank (no stamping)

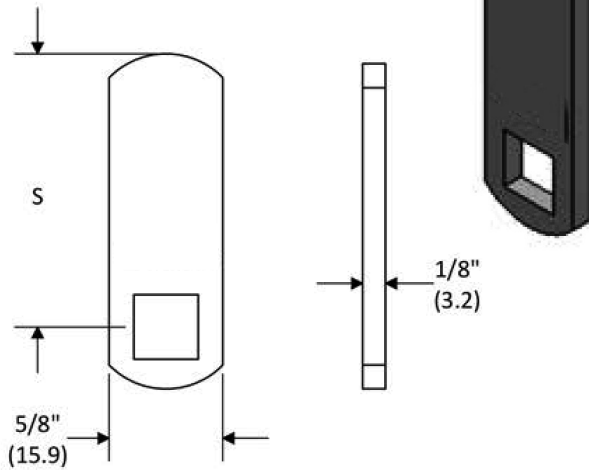
X = MASTERKEYING

M = Core or lock is masterkeyed
R = Regular (non-masterkeyed)

X = KEY PULLS

1 = One Key Pull
2 = Two Key Pulls

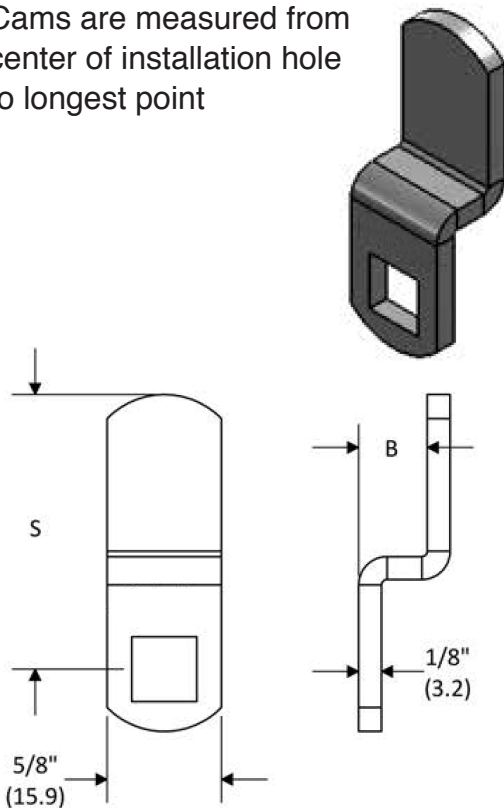
STRAIGHT CAMS



Part #	Length
CAMDS0625	5/8" (15.88 mm)
CAMDS0750	3/4" (19.05 mm)
CAMDS0875	7/8" (22.23 mm)
CAMDS1000	1" (25.4 mm)
CAMDS1125	1-1/8" (28.58 mm)
CAMDS1250	1-1/4" (31.75 mm)
CAMDS1375	1-3/8" (34.93 mm)
CAMDS1500	1-1/2" (38.1 mm)
CAMDS1750	1-3/4" (44.45 mm)
CAMDS2000	2" (50.8 mm)
CAMDS2500	2-1/2" (63.5 mm)
CAMDS3000	3" (76.2 mm)

OFFSET CAMS

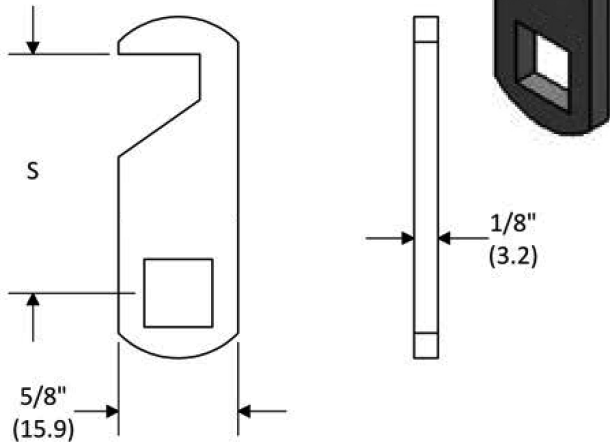
Cams are measured from center of installation hole to longest point



Part #	Length	Offset
CAMLO0875B0125	7/8" (22.23 mm)	1/8" (3.18 mm)
CAMLO1000B0125	1" (25.4 mm)	1/8" (3.18 mm)
CAMLO1250B0125	1-1/4" (31.75 mm)	1/8" (3.18 mm)
CAMLO1500B0125	1-1/2" (38.1 mm)	1/8" (3.18 mm)
CAMLO1750B0125	1-3/4" (44.45 mm)	1/8" (3.18 mm)
CAMLO2000B0125	2" (50.8 mm)	1/8" (3.18 mm)
CAMLO0875B0250	7/8" (22.23 mm)	1/4" (6.35 mm)
CAMLO1000B0250	1" (25.4 mm)	1/4" (6.35 mm)
CAMLO1250B0250	1-1/4" (31.75 mm)	1/4" (6.35 mm)
CAMLO1500B0250	1-1/2" (38.1 mm)	1/4" (6.35 mm)
CAMLO1750B0250	1-3/4" (44.45 mm)	1/4" (6.35 mm)
CAMLO2000B0250	2" (50.8 mm)	1/4" (6.35 mm)
CAMLO1000B0375	1" (25.4 mm)	3/8" (9.53 mm)
CAMLO1250B0375	1-1/4" (31.75 mm)	3/8" (9.53 mm)
CAMLO1500B0375	1-1/2" (38.1 mm)	3/8" (9.53 mm)
CAMLO2000B0375	2" (50.8 mm)	3/8" (9.53 mm)
CAMLO1250B0500	1-1/4" (31.75 mm)	1/2" (12.7 mm)
CAMLO1500B0500	1-1/2" (38.1 mm)	1/2" (12.7 mm)
CAMLO1750B0500	1-3/4" (44.45 mm)	1/2" (12.7 mm)
CAMLO2000B0500	2" (50.8 mm)	1/2" (12.7 mm)

HOOK CAMS

Cams are measured from center of installation hole to longest point



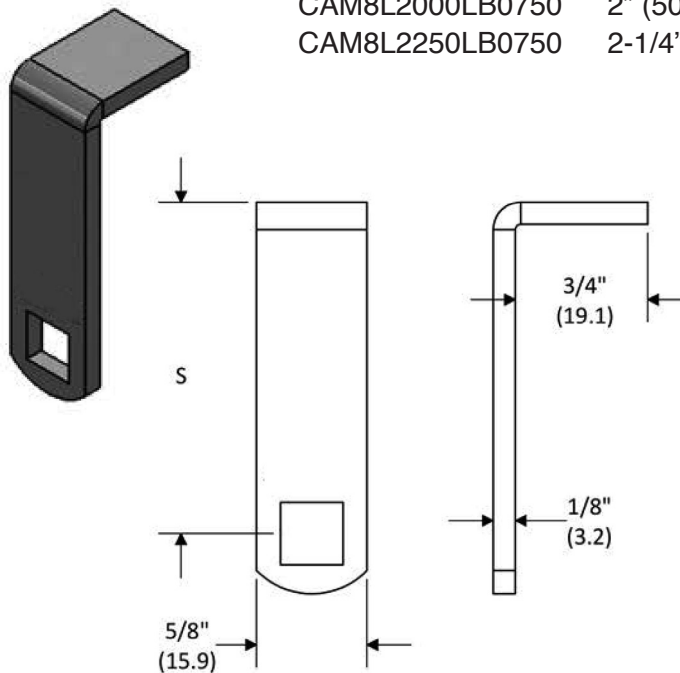
Part #

Length

CAMDH0750	3/4" (19.05 mm)
CAMDH1000	1" (25.4 mm)
CAMDH1250	1-1/4" (31.75 mm)
CAMDH1500	1-1/2" (38.1 mm)

BENT CAMS

Cams are measured from center of installation hole to longest point



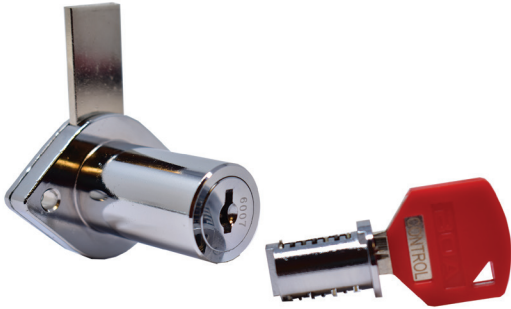
Part #

Length

Bend

CAM8L1750LB0750	1-3/4" (44.45 mm)	3/4" (19.05 mm)
CAM8L2000LB0750	2" (50.8 mm)	3/4" (19.05 mm)
CAM8L2250LB0750	2-1/4" (57.15 mm)	3/4" (19.05 mm)

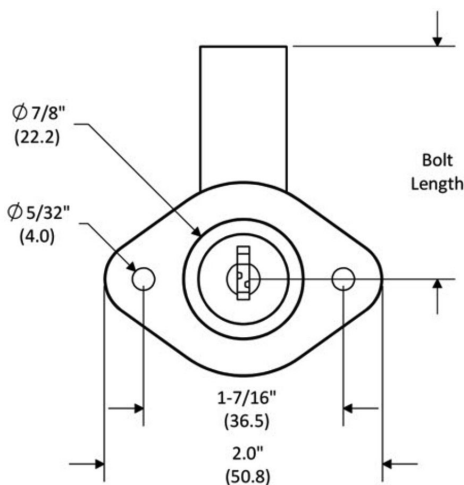
DEAD BOLTS



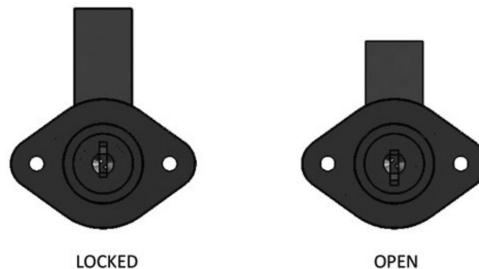
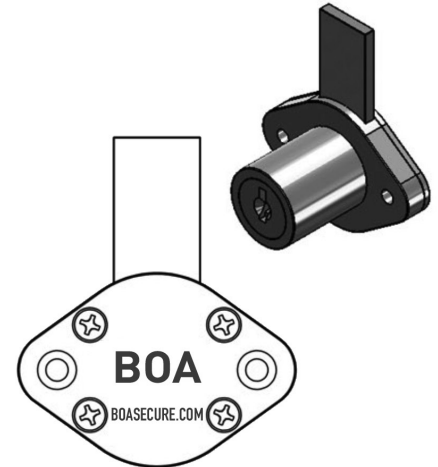
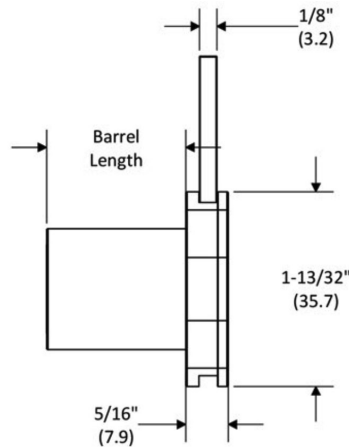
BOA Key Removable Core Deadbolts are available in the industry standard 54G Keyway with 6 tumblers. Deadbolts are available in 1" and 1-1/2" barrel length dimensions. Deadbolts are used on wood or metal applications. Optional accessories available.

Base Part#: **DLD** **XXXX** **XXXX** **XX** **X** **X** **X**

STRAIGHT DEADBOLTS



* Parenthesis dimensions are in mm.



Bolt travel is ~11/32" (8.7 mm).
The A375 bolt is flush with the top of the backplate in the open/unlocked position.

DLD **XXXX** **XXXX** **XX** **X** **X** **X**

XXXX = BARREL LENGTH

1000 = 1" Barrel length

1500 = 1-1/2" Barrel length

XX = METAL FINISH

PN = Polished Nickel (Standard)

SN = Satin Nickel

BL = Black

X = MASTERKEYING

M = Core or lock is masterkeyed

R = Regular (non-masterkeyed)

XXXX = BOLT THROW LENGTH

A375 = 1-1/16" length (locked)

B375 = 1-3/4" length (locked)

XXXX = Custom Cut Length

X = STAMP LOCK

S = Stamp lockface or lock (Standard)

B = Blank (no stamping)

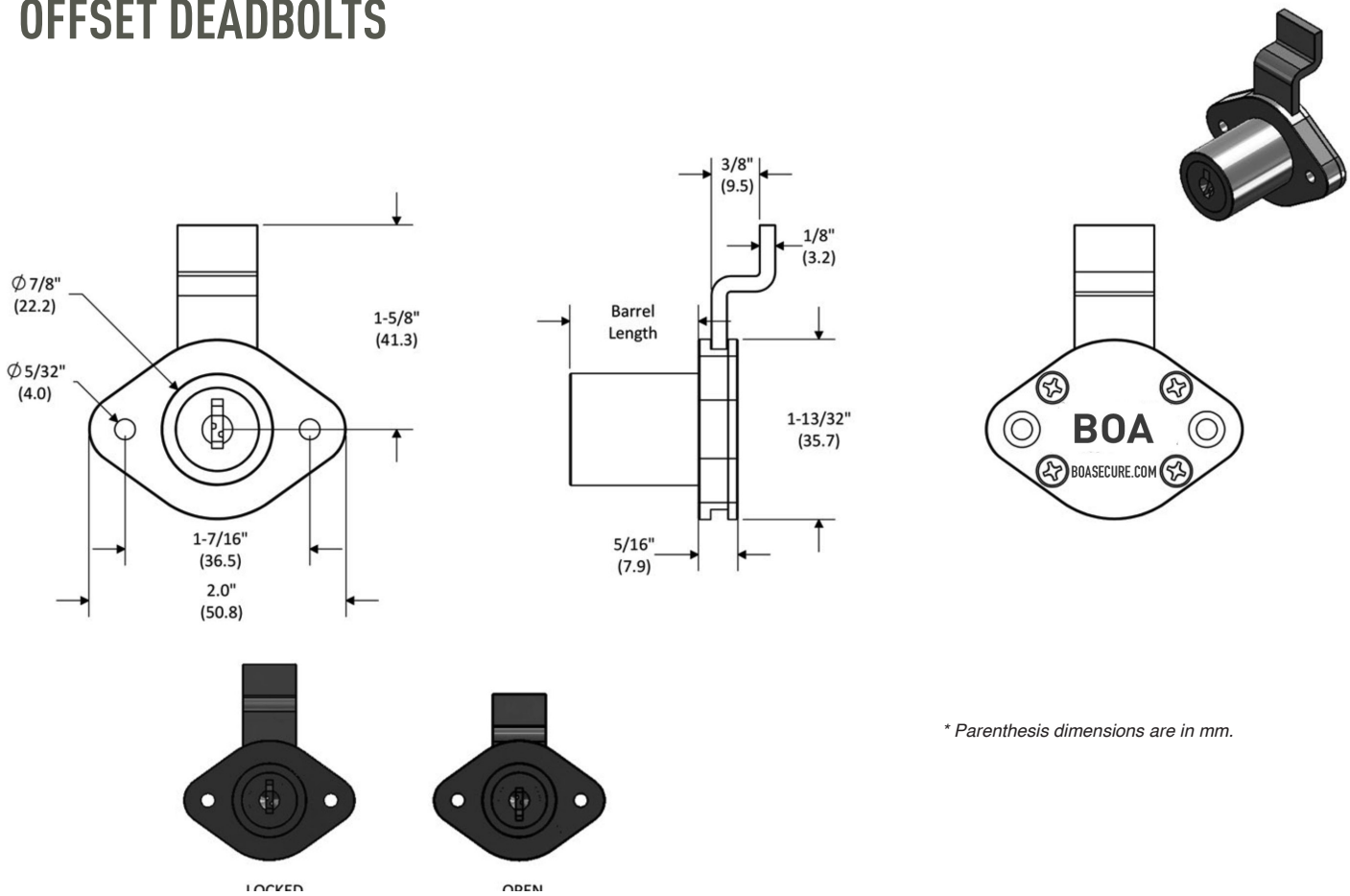
KEY PULLS

1 = One Key Pull

2 = Two Key Pulls

OFFSET DEAD BOLTS

OFFSET DEADBOLTS



* Parenthesis dimensions are in mm.

DLD XXXX C375 XX X X X

XXXX = BARREL LENGTH

1000 = 1" Barrel length

1500 = 1-1/2" Barrel length

XX = METAL FINISH

PN = Polished Nickel (Standard)

SN = Satin Nickel

BL = Black

X = STAMP LOCK

S = Stamp lockface or lock (Standard)

B = Blank (no stamping)

X = MASTERKEYING

M = Core or lock is masterkeyed

R = Regular (non-masterkeyed)

KEY PULLS

1 = One Key Pull

2 = Two Key Pulls

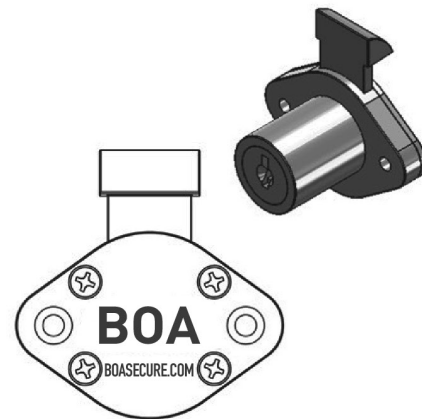
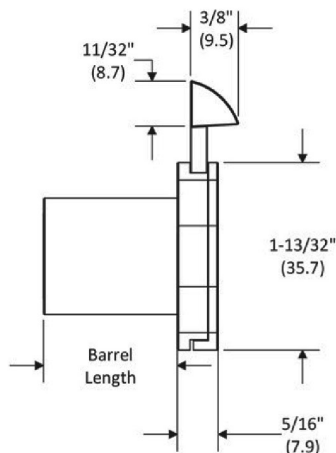
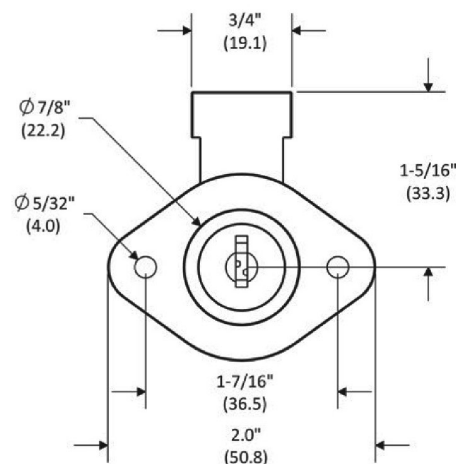
SPRING BOLTS



BOA Key Removable Core Latchbolts are available in the industry standard 54G Keyway with 6 tumblers. Latchbolts are available in 1" and 1-1/2" barrel length dimensions. Latchbolts are used on wood or metal applications. Optional accessories available.

Base Part#: **SPRD XXXX L240 XX X X X**

* Parenthesis dimensions are in mm.



Example Shown
DR1000L240PCSM1



LOCKED



OPEN

Bolt travel is ~9/32" (7.1 mm).

SPRD XXXX L240 XX X X

XXXX = BARREL LENGTH

1000 = 1" Barrel length

1500 = 1-1/2" Barrel length

XX = METAL FINISH

PN = Polished Nickel (Standard)

SC = Satin Nickel

BL = Black

X = STAMP LOCK

S = Stamp lockface or lock (Standard)

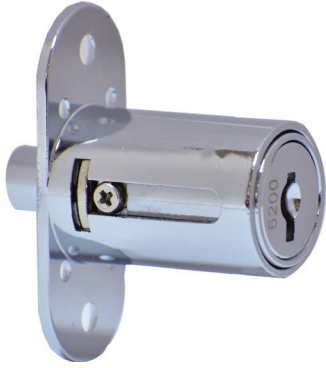
B = Blank (no stamping)

X = MASTERKEYING

M = Core or lock is masterkeyed

R = Regular (non-masterkeyed)

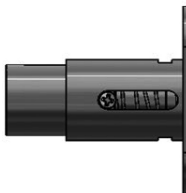
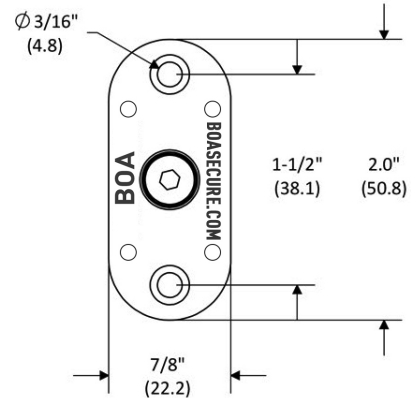
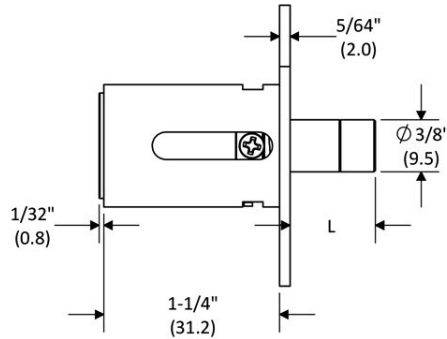
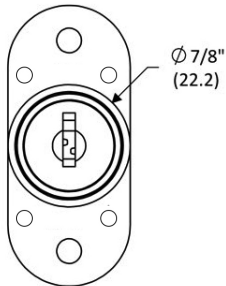
PLUNGER LOCK- WOOD & TRACK MOUNTED



BOA Removable Core plunger locks are available in the industry standard 54G Keyway with 6 tumblers. Bolt length (throw) is available in 3/8", 1/2" and 5/8". Locks are available in both key retaining and non key retaining. Every round plunger bolt is drilled and tapped to receive steel insert screws.

Base Part#: **PLD-WA1250** XXXX XX X X X

* Parenthesis dimensions are in mm.



PLD-WA1250 XXXX XX X X X

1250
1-1/4" Barrel Length

XXXX = BOLT LENGTH THROW

R375 = 3/8" bolt throw
R500 = 1/2" bolt throw
R625 = 5/8" bolt throw

XX = METAL FINISH

PN = Polished Nickel (Standard)
SN = Satin Nickel
BL = Black

X = STAMP LOCK

S = Stamp lockface or lock
B = Blank, No stamping

X = MASTERKEYING

M = Core or lock is masterkeyed
R = Regular (non-masterkeyed)

X = KEY PULLS

1 = One Key Pull
2 = Two Key Pulls

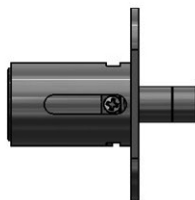
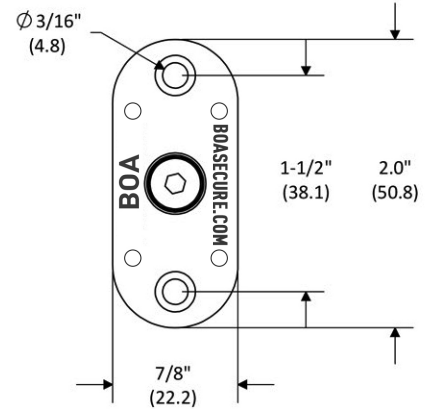
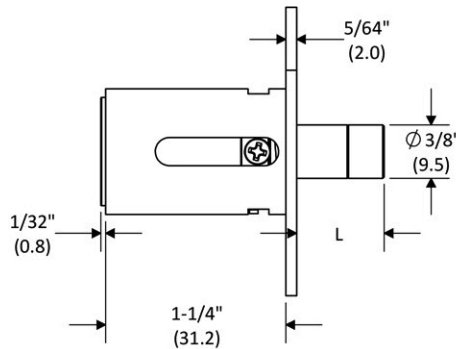
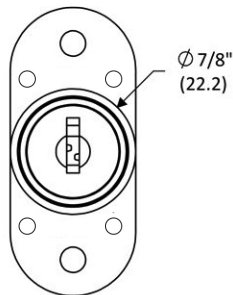
PLUNGER LOCKS- GLASS MOUNTED



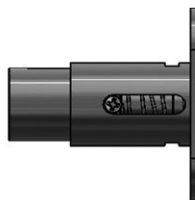
BOA Removable Core plunger locks are available in the industry standard 54G Keyway with 6 tumblers. Bolt length (throw) is available in 3/8", 1/2" and 5/8". Locks are available in both key retaining and non key retaining. Every round plunger bolt is drilled and tapped to receive steel insert screws.

Base Part#: **PLD-GL1250** XXXX XX X X X

* Parenthesis dimensions are in mm.



LOCKED



OPEN

PLD-GL1250 XXXX XX X X X

1250

1-1/4" Barrel Length

XXXX = BOLT LENGTH THROW

R375 = 3/8" bolt throw

R500 = 1/2" bolt throw

R625 = 5/8" bolt throw

XX = METAL FINISH

PN = Polished Nickel (Standard)

SN = Satin Nickel

BL = Black

X = STAMP LOCK

S = Stamp lockface or lock (Standard)

B = Blank, No stamping

X = MASTERKEYING

M = Core or lock is masterkeyed

R = Regular (non-masterkeyed)

X = KEY PULLS

1 = One Key Pull

2 = Two Key Pulls

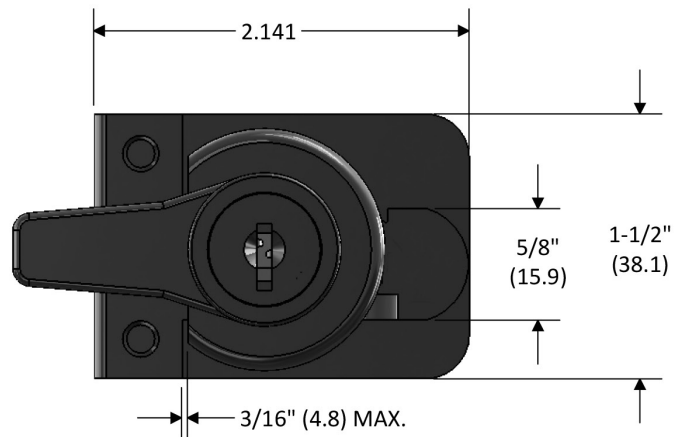
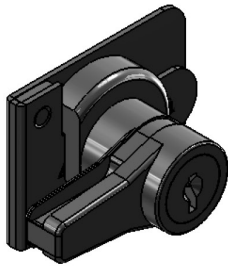
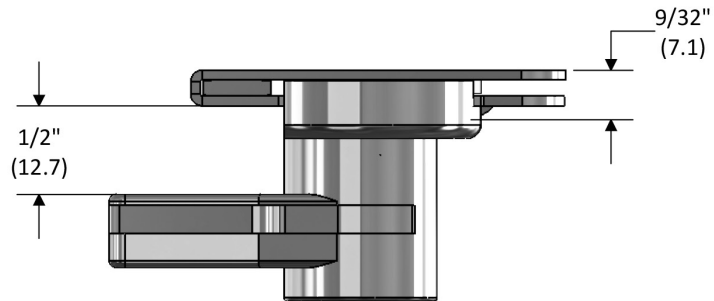
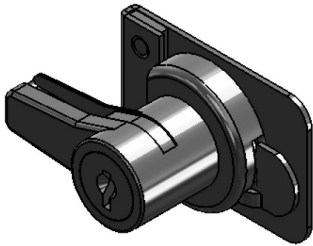
RATCHET LOCKS



BOA Key Removable Core Ratchet locks are available in the industry standard 54G Keyway with 6 tumblers. Five different mounting possibilities make this ratchet lock very versatile. The BOA Ratchet Lock can be used on plexiglass, wood, metal or glass sliding doors.

Base Part#: **RLD XXXX**

* Parenthesis dimensions are in mm.



RLD XXXX

XXXX = RATCHET BARS

R250 = Regular Ratchet Bar for glass doors with a max thickness of 1/4"

R380 = Regular Ratchet Bar for glass doors with a max thickness of 3/8"

A750 = Extended Ratchet Bar for glass doors with a max thickness of 3/4"

RADH = Small adhesive mounted plate (1-1/2" x 2")

RADE = Large adhesive mounted plate (1-1/2" x 3-7/8")

RATCHET BARS



R250
Small Ratchet Bar 1/4"



RADH
Short Ratchet Plate
1-1/2" x 2"



R375
Regular Ratchet Bar 3/8"



RADE
Long Ratchet Plate
1-1/2" x 3-7/8"



R750
Extended Ratchet Bar 3/4"



BOA SECURITY TECHNOLOGIES

586 New York Avenue, Unit 3

Huntington, NY 11743

T 516-576-0295 | F 631-470-8099

Alan.Lurie@BOA-ST.com

www.BoaSecure.com
