



**MEDECO REMOVABLE AND
NON-REMOVABLE CORE LOCKS**

BOA SECURITY TECHNOLOGIES, INC.

Located in Huntington, New York, we originally established our business in 1997 under the name of BOA Handcuff Company, Inc. At that time our business focus was solely our patented High Security Handcuffs for Correctional Facilities worldwide. In 2014 we rebranded our company and began competing for business in the area we all knew best; Retail Cabinet and Showcase Locks. However, we are much more than just a manufacturer, distributor or service provider. We are integrators. We find the best product or mix of products to find solutions for our customers. We take pride in what we do and who we do it for. We do not work on excessive margins as many of our competitors. We work on smaller margins, do a great job and have built our business accordingly. We service some of the best and biggest retailers and correctional facilities in the world and would be proud to add you to our list of happy clients.

WHAT:

Specialized Manufacturer, Distributor and Field Service Provider of Locks used by Retailers for both their showcases as well as interior and perimeter doors.

WHY:

We will save you money and ensure your security via a diversified vendor base with equivalent if not better products and services.

WHERE:

BOA services our clients all through the United States and Canada.

WHEN:

Typical lead times for orders are 7-10 days after receipt of order. Typical response times to “request for service” are within 24 hours. If you require faster service, just tell us so.

Ramp up Time for transferring business to BOA from current vendor is 45 days for BOA to prepare component inventory to meet your immediate needs.

HOW:

Utilizing our extensive inventory of components (either manufactured by us or simply distributed by us), we provide showcase locks and door hardware that meet your specific needs for plug and play replacement or new installations. In addition, our Field Service Tech’s are ready to go at a moment’s notice anywhere throughout the U.S. and Canada. Just send us an email and we will take the issue off your plate.



STANDARD FINISH

BC 26/18
Brushed Satin Chrome (26)

SPECIAL PLATING FINISHES



SB
Satin Brass 06



BL
Black 22



AB
Antique Brass 09



DB
Dark Bronze/ Clear Coat 24



PN
Polished Nickel 18

GENERAL INFORMATION

DELIVERY:

At BOA, we assemble every lock to order and strive to meet your requested in-house date. If we cannot meet your requested date, we will advise you within 24-hours of receiving your order. Our standard lead time is to ship within 10-days after receipt of your order. Rush orders and emergency services are available.

BOA’s large component inventory and assemble-to-order factory enables you to order locks keyed alike, keyed differently or master keyed in groups using hundreds of key combinations. All keys are sold separately.

PLATING:

Our STANDARD PLATING finish is a Brushed Satin Chrome (26) Core Face combined with a Polished Nickel (18) Barrel Housing surrounding the Core.

A wide range of SPECIAL PLATING finishes are also available.

PLEASE NOTE: Extended lead-time and plating lot charges may apply to Special and Custom finishes.

KEY CONTROL:

BOA’s standard operating procedure is to request your end-user name and exact location. This enables us to maintain your key plans by store, retail department, showcase/cabinets, or office. We maintain a historical database of keying records. This gives you the ability to match key numbers of previous orders.

KEY RETAINING VS. NON-KEY RETAINING LOCK FUNCTION:

Standard high security lock operation is Key Retaining (Captive), which means that the operating key can only be removed from the lock in the locked position. For lower security situations, Non-Captive key operation is the standard. This means the key is removable in both the locked and unlocked position.

Medeco® high security cylinders are well recognized throughout the world as the standard for high security in a wide variety of applications. The mechanical locks feature unique cylinder designs that provide unmatched security and flexibility. Medeco® locks by BOA are available in a wide variety of standard sizes and functions.

Features:

- High Security UL Listed locks feature hardened inserts for the best protection against physical attack
- 1000's of high-security precision cut key combinations
- Biaxial locks feature pick resistant offset chisel-pointed pins
- Restricted Keyways for a high level of key control
Additional keys will only be released with an authorized signature

Mechanical Specifications:

- UL437 Listed
- Machined brass plug with hardened inserts
- Keyed alike or keyed different
- Master keyed with other style products
- Key retaining or multiple key pulls
- Clockwise or counterclockwise rotation



REMOVABLE CORE OPTION: This feature allows cores to be changed out in seconds: to provide an entirely new keying combination. For applications that may require instantaneous re-keying due to lost or stolen keys, or where periodic re-keying is done as a matter of good business practice, the removable core cylinders save valuable time and money.

Features:

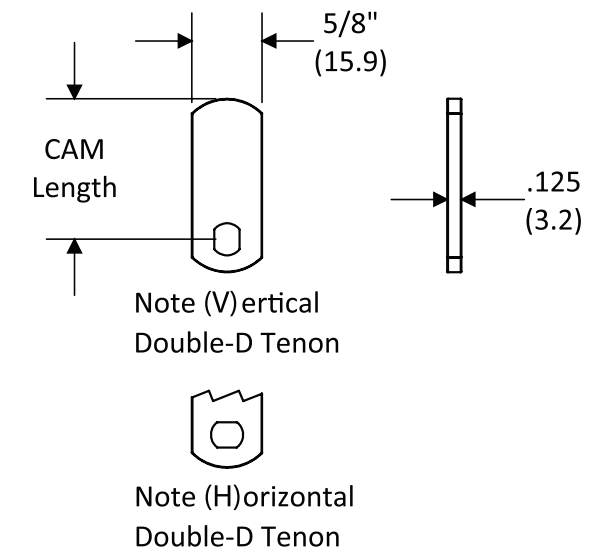
- Removable Core locks offer the security and convenience of removable core in the smaller footprint of a standard 3/4" diameter cam lock or 7/8" drawer lock
- 1000's of high-security precision cut key combinations
- Biaxial locks feature pick resistant offset chisel-pointed pins
- Restricted keyways and high level of key control
Additional keys will only be released with an authorized signature

Mechanical Specifications:

- Special "control" key removes the cam lock plug for fast and secure combination change/rekey
- Operating key operates the lock without removing the core
- Machined brass plug with hardened inserts
- Keyed alike or keyed different
- Master keyed with other style products
- Key retaining is standard. Non Key retaining is product specific
- Clockwise or counterclockwise rotation

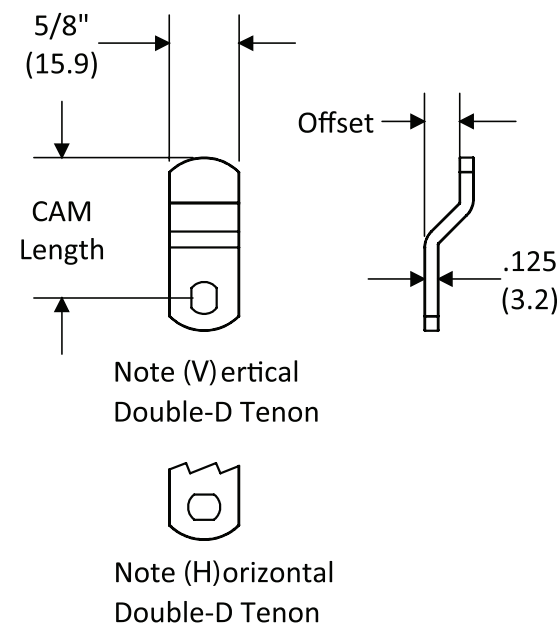
STRAIGHT CAMS

Part #	Length
00-CAM-0750	0.750" (19.1 MM)
00-CAM-1250	1.250" (31.8 MM)
00-CAM-1750	1.750" (44.5MM)
00-CAM-2000	2.000" (50.8 MM)



OFFSET CAMS

Cams are measured from center of installation hole to longest point

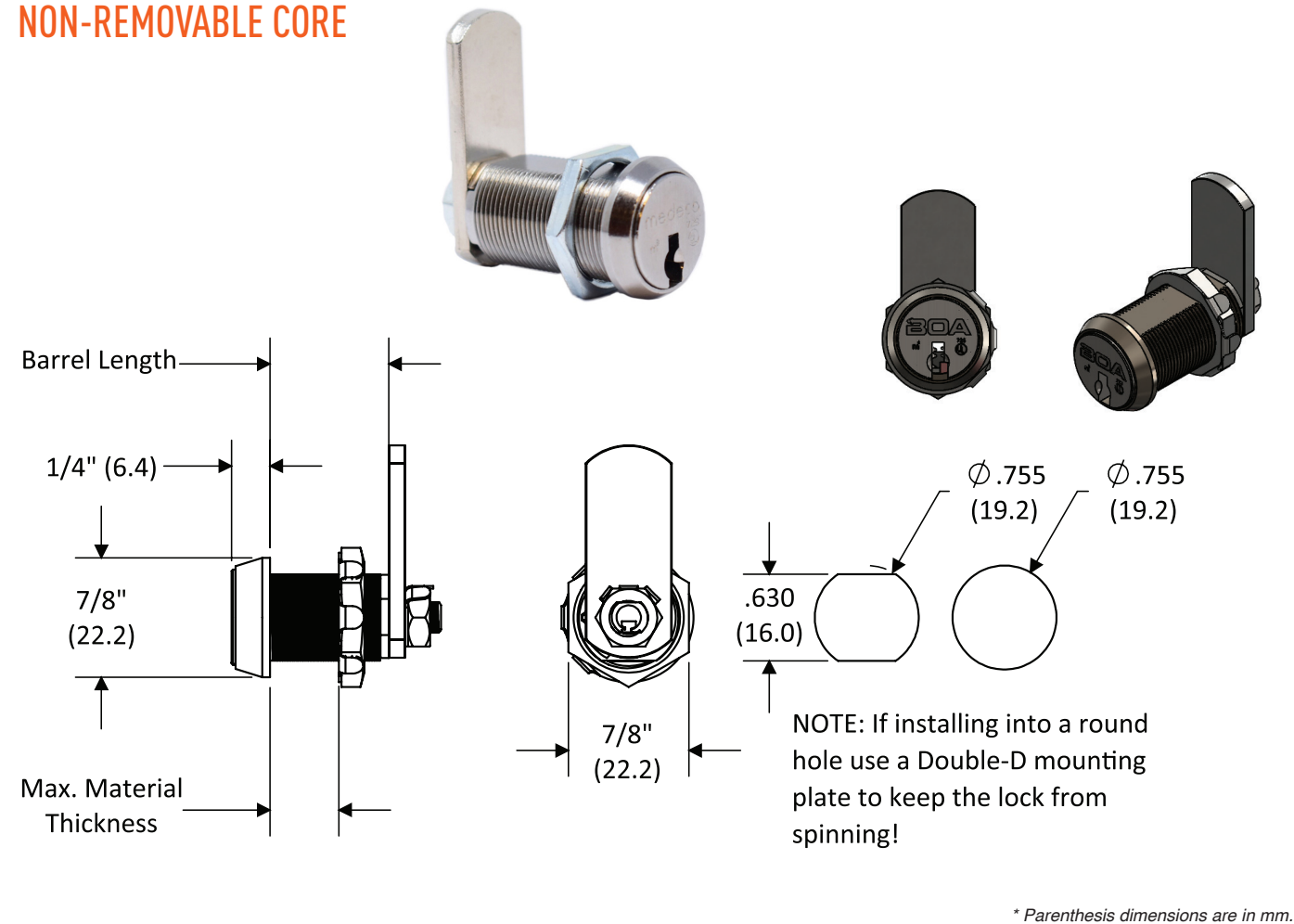


NOTE:
Other Cam Sizes are available.
Contact us for availability.

Part #	Length	Offset
00-CAM-1250X0313	1.250" (31.8 MM)	0.3125" (7.9 MM)
00-CAM-2000X0313	2.000" (50.8 MM)	0.3125" (7.9 MM)

CAM LOCKS

NON-REMOVABLE CORE



Base Part#: **06-MCL** XXXX XXXX XX X X XX X

XXXX = BARREL LENGTH

0875 = 7/8"
1125 = 1-1/8" (Standard)
1750 = 1-3/4"
2000 = 2"

XX = FINISHES

BC = Brushed Chrome 26 (Standard)
SB = Satin Brass 06
BL = Black 22
AB = Antique Brass 09
DB = Dark Bronze/ Clear Coat 24
PN = Polished Nickel 18

X = MATERIAL INSTALLED ON

G = Glass
M = Metal
W = Wood

XXXX = CAM ROTATION

90° Clockwise
1203 = 12 – 03 O'clock
0306 = 03 – 06 O'clock
0906 = 06 – 09 O'clock
0912 = 09 – 12 O'clock

90° Counter-Clockwise

1209 = 12 – 09 O'clock
0906 = 09 – 06 O'clock
0603 = 06 – 03 O'clock
0312 = 03 – 12 O'clock

X = STAMP LOCK

S = Stamp lockface or lock
B = Blank (no stamping)
(Standard)

XX = KEYING

KA = Keyed Alike
KD = Keyed Different
MA = Master-Keyed and
Keyed Alike
MD = Master Keyed and
Keyed Different

X = KEY REMOVES

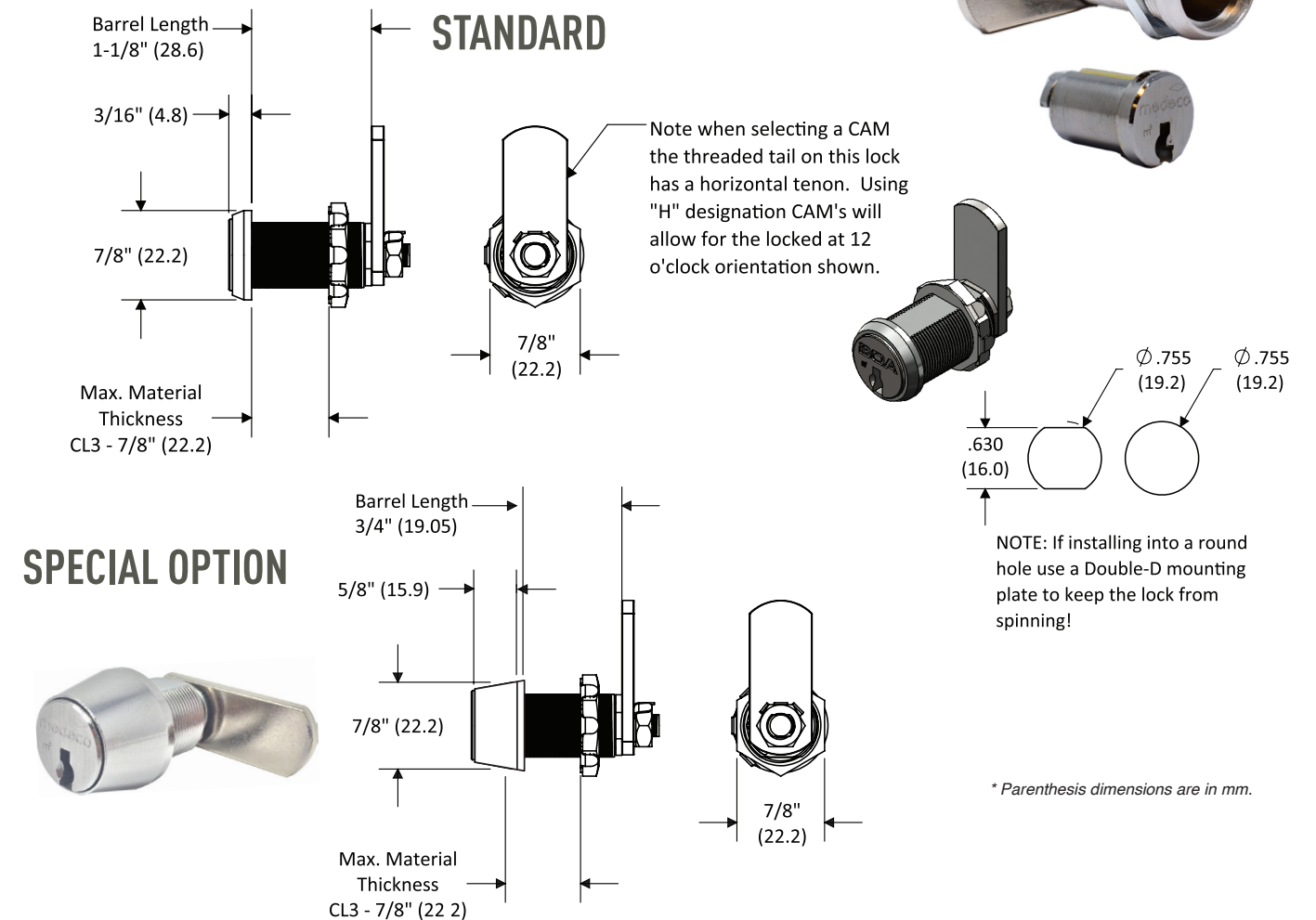
1 = Locked Position Only (Standard)
2 = Locked and Unlocked Positions

* Parenthesis dimensions are in mm.

CAM LOCKS

REMOVABLE CORE

Only Available in Key Retaining



Base Part#: **07-MCL** XXXX XXXX XX X X XX

XXXX = BARREL LENGTH

0750 = 3/4" (Note Larger Head Size)
1125 = 1-1/8" (Standard)
Call for custom sizes

XX = FINISHES

BC = Brushed Chrome 26 (Standard)
SB = Satin Brass 06
BL = Black 22
AB = Antique Brass 09
DB = Dark Bronze/ Clear Coat 24
PN = Polished Nickel 18

X = MATERIAL INSTALLED ON

G = Glass
M = Metal
W = Wood

XXXX = CAM ROTATION

90° Clockwise
1203 = 12 – 03 O'clock
0306 = 03 – 06 O'clock
0906 = 06 – 09 O'clock
0912 = 09 – 12 O'clock

90° Counter-Clockwise

1209 = 12 – 09 O'clock
0906 = 09 – 06 O'clock
0603 = 06 – 03 O'clock
0312 = 03 – 12 O'clock

X = STAMP LOCK

S = Stamp lockface or lock
B = Blank (no stamping)
(Standard)

XX = KEYING

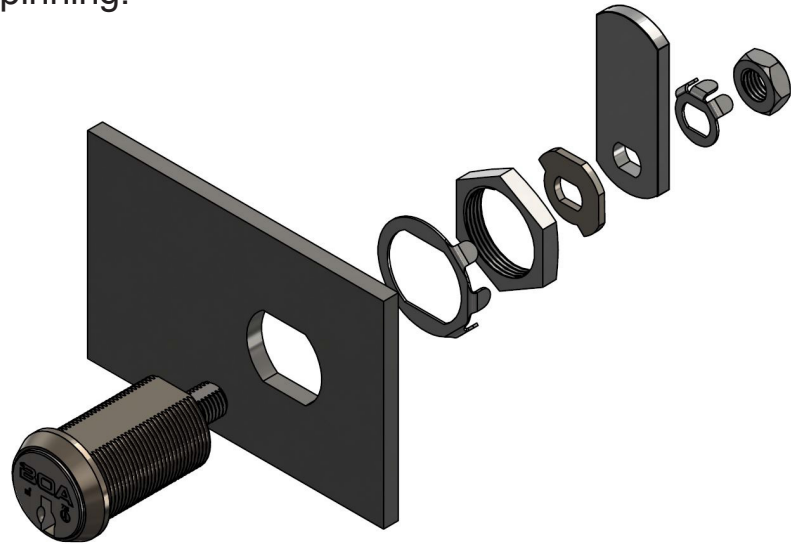
KA = Keyed Alike
KD = Keyed Different
MA = Master-Keyed and
Keyed Alike
MD = Master Keyed and
Keyed Different

* Parenthesis dimensions are in mm.

CAM LOCKS INSTALLATION

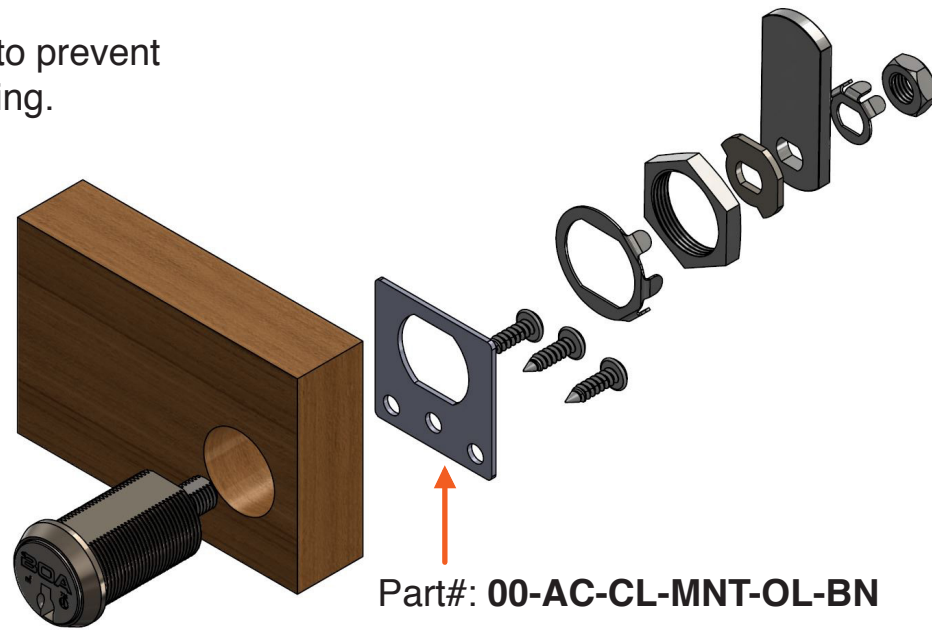
METAL INSTALLATION

Cut double D hole on metal to prevent cam lock from spinning.



WOOD INSTALLATION

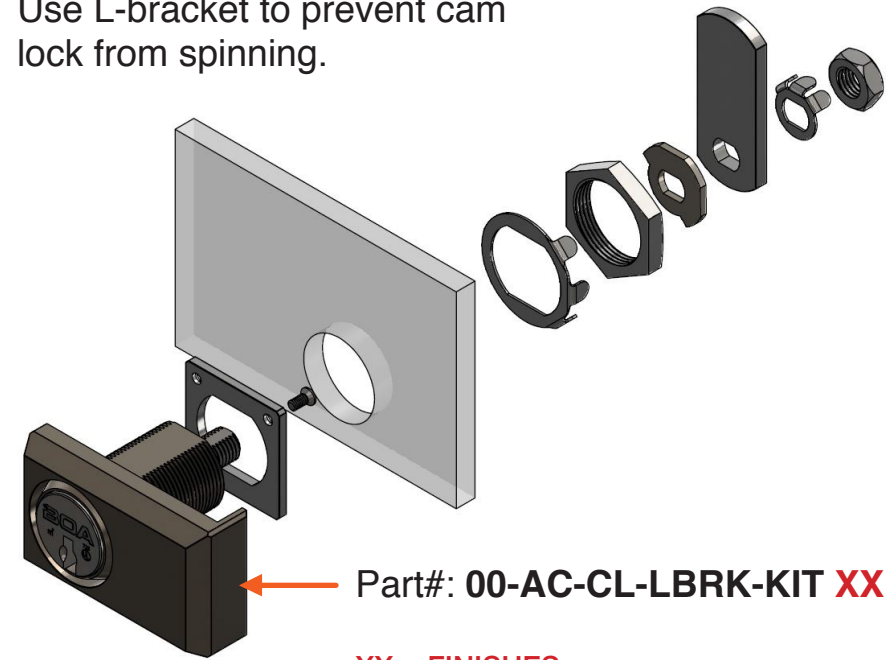
Use mounting plate to prevent cam lock from spinning.



CAM LOCKS INSTALLATION

GLASS INSTALLATION

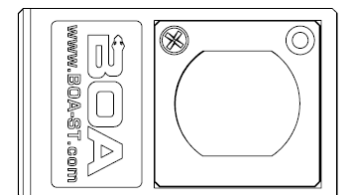
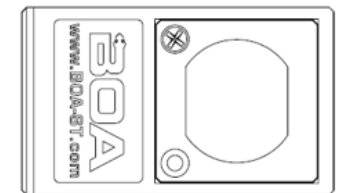
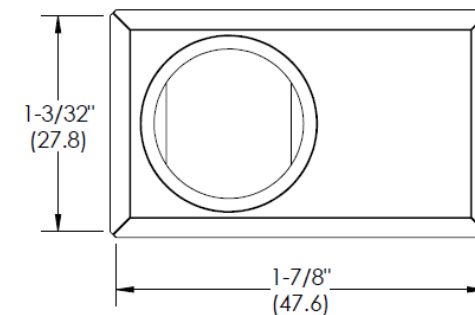
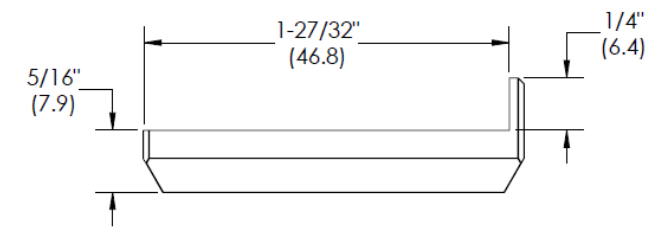
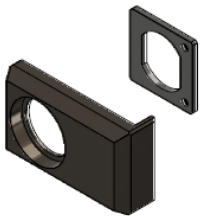
Use L-bracket to prevent cam lock from spinning.



XX = FINISHES

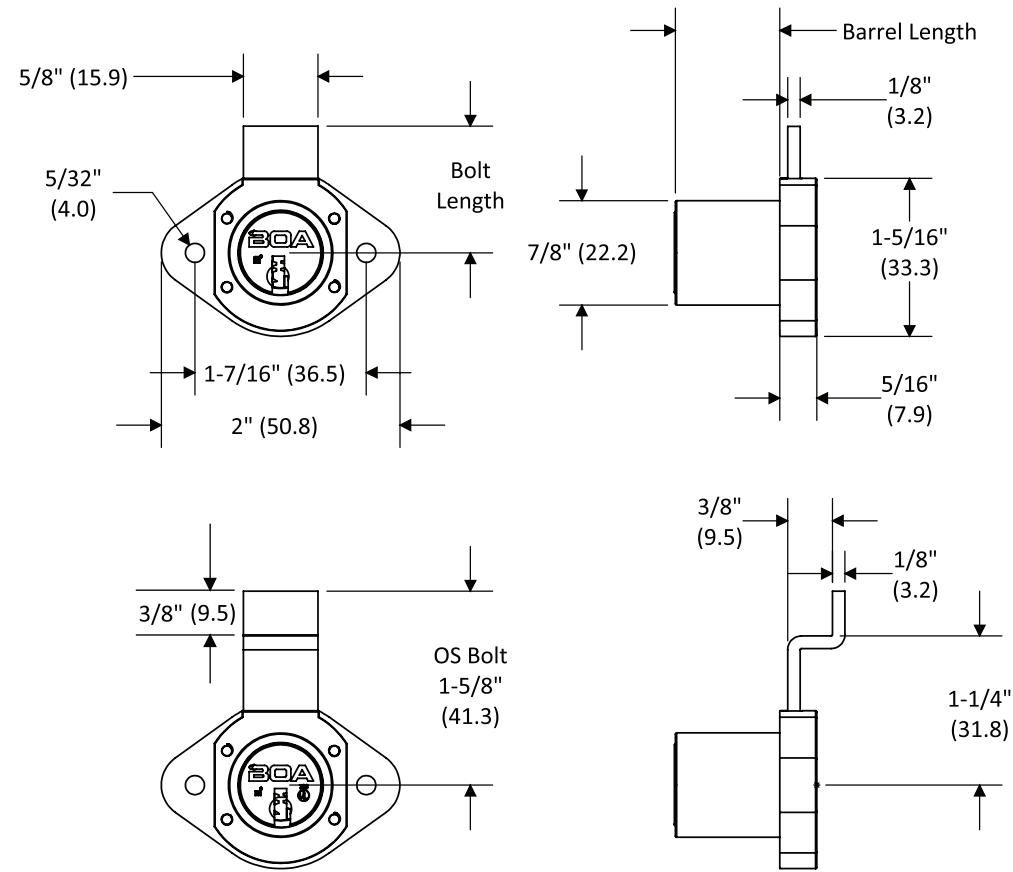
PN = Polished Nickel (Standard)

SN = Satin Nickel

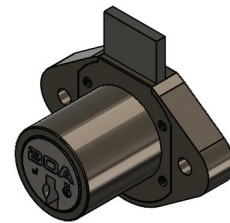


DRAWER LOCKS: DEAD BOLT

NON-REMOVABLE CORE



* Parenthesis dimensions are in mm.



NOTE:
Products pictured in the locked position Nominal Bolt travel is 7/16" (11.1mm)
Short bolt (BS) option retracts completely into housing.

Base Part#: **06-MDB** XXXX XXXX X XX X XX

XXXX = BARREL LENGTH

1000 = 1" Barrel length
1500 = 1-1/2" Barrel length

XXXX = BOLT LENGTH

A438 = 1-1/16" length (locked)
B438 = 1-3/4" length (locked)
OS438 = 1-5/8" (locked)
XXXX = Custom Cut Length

X = STAMP LOCK

S = Stamp lockface or lock
B = Blank (no stamping)
(Standard)

XX = KEYING

KA = Keyed Alike
KD = Keyed Different
MA = Master-Keyed and Keyed Alike
MD = Master Keyed and Keyed Different

X = KEY REMOVES

1 = Locked Position Only (Standard)
2 = Locked and Unlocked Positions

XX = FINISHES

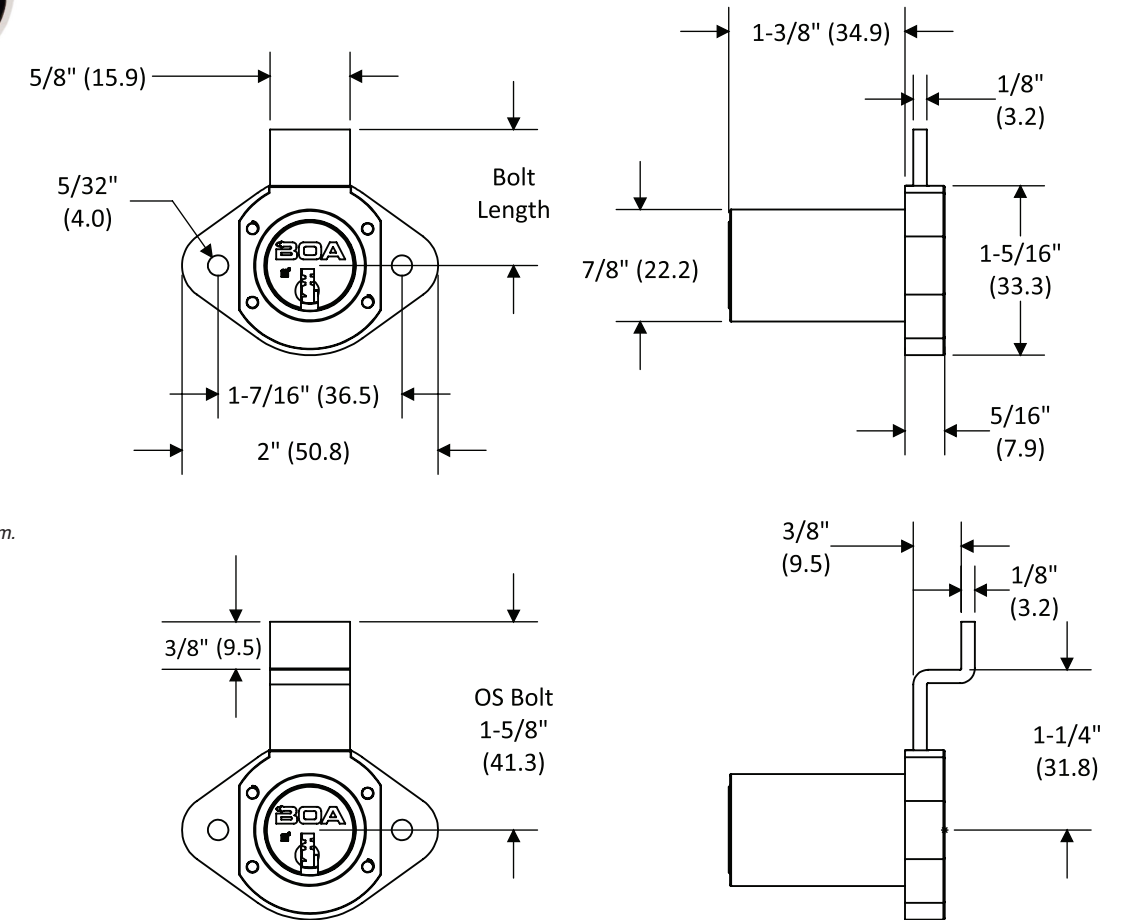
BC = Brushed Chrome 26 (Standard)
SB = Satin Brass 06
BL = Black 22
AB = Antique Brass 09
DB = Dark Bronze/ Clear Coat 24
PN = Polished Nickel 18

DRAWER LOCKS: DEAD BOLT

REMOVABLE CORE



* Parenthesis dimensions are in mm.



Base Part#: **07-MDB-1500** XXXX X XX X XX

XXXX = BOLT LENGTH

A438 = 1-1/16" length (locked)
B438 = 1-3/4" length (locked)
OS438 = 1-5/8" (locked)
XXXX = Custom Cut Length

X = STAMP LOCK

S = Stamp lockface or lock
B = Blank (no stamping)
(Standard)

XX = KEYING

KA = Keyed Alike
KD = Keyed Different
MA = Master-Keyed and Keyed Alike
MD = Master Keyed and Keyed Different

X = KEY REMOVES

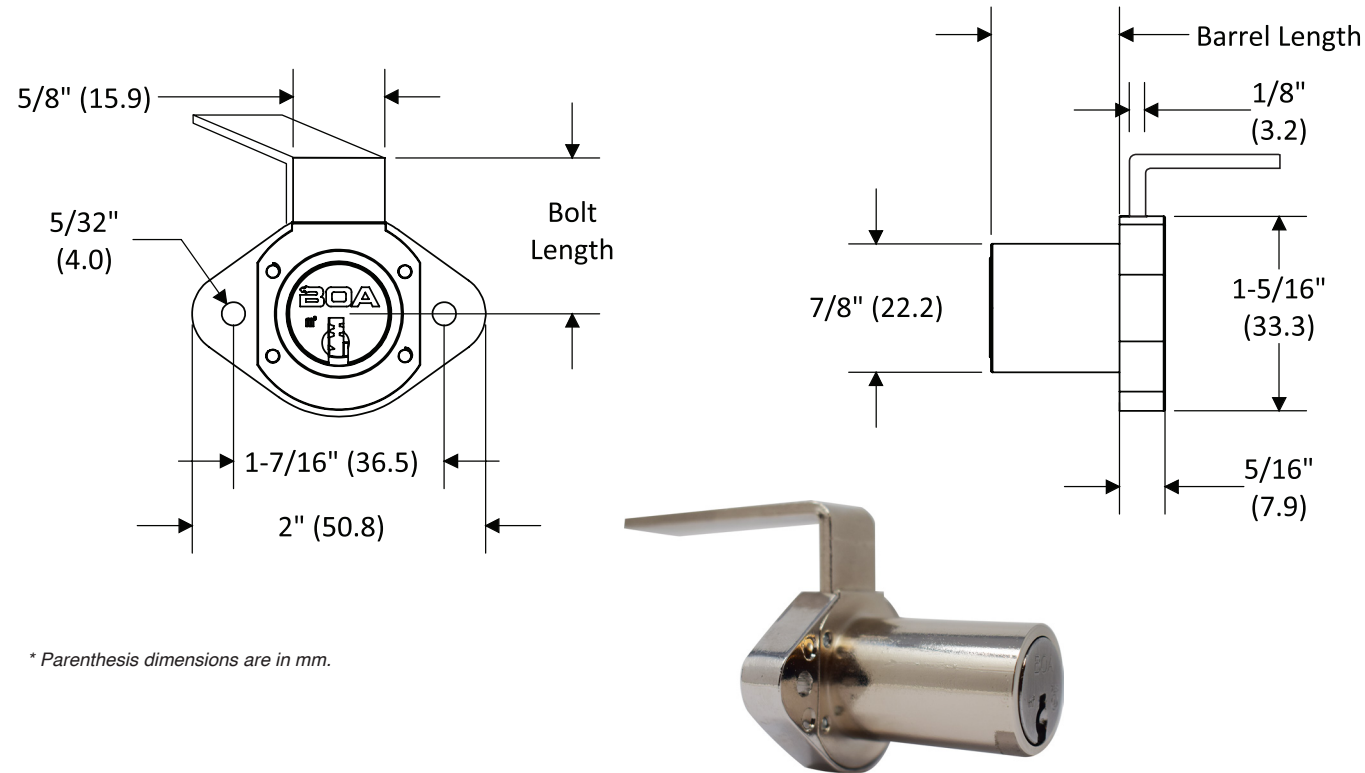
1 = Locked Position Only (Standard)
2 = Locked and Unlocked Positions

XX = FINISHES

BC = Brushed Chrome 26 (Standard)
SB = Satin Brass 06
BL = Black 22
AB = Antique Brass 09
DB = Dark Bronze/ Clear Coat 24
PN = Polished Nickel 18

DRAWER LOCKS: GANG LOCK

NON-REMOVABLE CORE



* Parenthesis dimensions are in mm.

Base Part#: **06-MGL** XXXX XXXX X XX X XX

XXXX = MOUNT STYLE/BAR LENGTH

Front Mount Locked Up

2424 = 24"
2436 = 36"
24CL = Custom
24NO = No Bar

Side Mount Locked Up

2624 = 24"
2636 = 36"
26CL = Custom

Front Mount Locked Down

2824 = 24"
2836 = 36"
28CL = Custom
28NO = No Bar

Side Mount Locked Down

3024 = 24"
3036 = 36"
30CL = Custom

XXXX = BARREL LENGTH

1000 = 1" Barrel length
1500 = 1-1/2" Barrel length

X = STAMP LOCK

S = Stamp lockface or lock
B = Blank (no stamping)
(Standard)

XX = KEYING

KA = Keyed Alike
KD = Keyed Different
MA = Master-Keyed and
Keyed Alike
MD = Master Keyed and
Keyed Different

X = KEY REMOVES

1 = Locked Position Only
(Standard)
2 = Locked and
Unlocked Positions

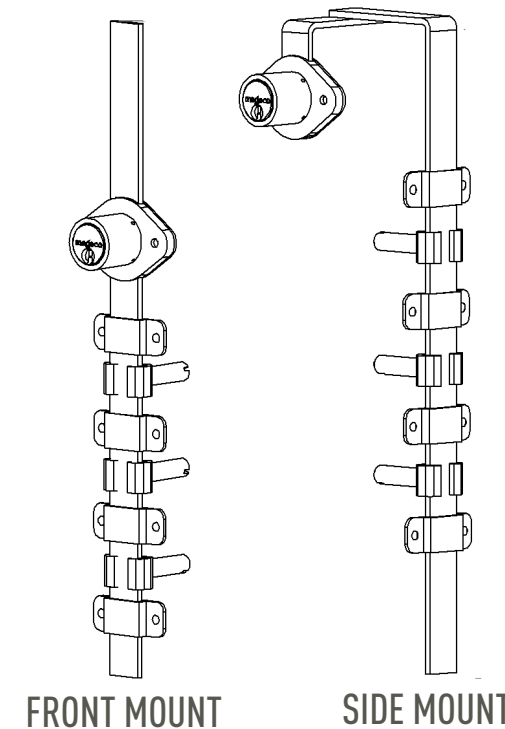
XX = FINISHES

BC = Brushed Chrome 26
(Standard)
SB = Satin Brass 06
BL = Black 22
AB = Antique Brass 09
DB = Dark Bronze/
Clear Coat 24
PN = Polished Nickel 18

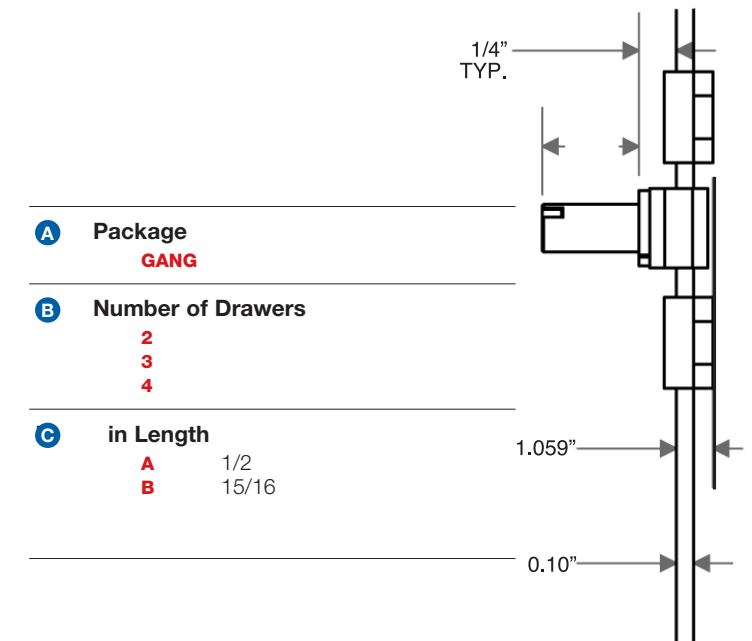
LOCKED UP OPTION: Notch for Pin must be on Bottom of Drawer
LOCKED DOWN OPTION: Notch for Pin must be on top of Drawer

DRAWER LOCKS: GANG LOCK

REMOVABLE CORE



GANG LOCK PACKAGES



Base Part#: **07-MGL** XXXX XXXX X XX X XX

XXXX = MOUNT STYLE/BAR LENGTH

Front Mount Locked Up

2424 = 24"
2436 = 36"
24CL = Custom
24NO = No Bar

Side Mount Locked Up

2624 = 24"
2636 = 36"
26CL = Custom

Front Mount Locked Down

2824 = 24"
2836 = 36"
28CL = Custom
28NO = No Bar

Side Mount Locked Down

3024 = 24"
3036 = 36"
30CL = Custom

XXXX = BARREL LENGTH

1000 = 1" Barrel length
1500 = 1-1/2" Barrel length

X = STAMP LOCK

S = Stamp lockface or lock
B = Blank (no stamping)
(Standard)

XX = KEYING

KA = Keyed Alike
KD = Keyed Different
MA = Master-Keyed and
Keyed Alike
MD = Master Keyed and
Keyed Different

X = KEY REMOVES

1 = Locked Position Only
(Standard)
2 = Locked and
Unlocked Positions

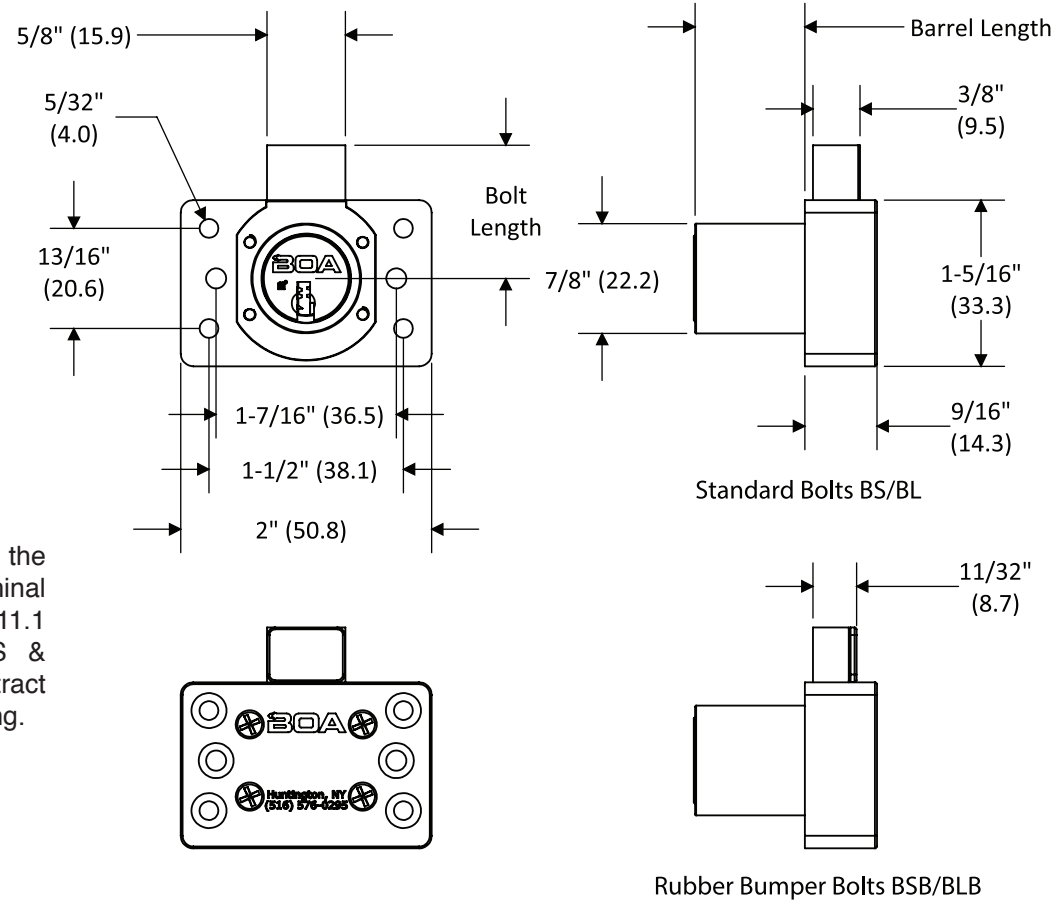
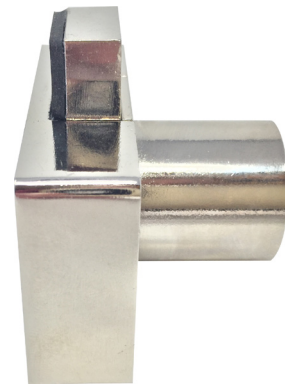
XX = FINISHES

BC = Brushed Chrome 26
(Standard)
SB = Satin Brass 06
BL = Black 22
AB = Antique Brass 09
DB = Dark Bronze/
Clear Coat 24
PN = Polished Nickel 18

LOCKED UP OPTION: Notch for Pin must be on Bottom of Drawer
LOCKED DOWN OPTION: Notch for Pin must be on top of Drawer

DRAWER LOCKS: DEAD BOLT "PIT BULL"

NON-REMOVABLE CORE



NOTE:
Products pictured in the locked position Nominal Bolt travel is 7/16" (11.1 mm) Short bolt (BS & BSB) options retract completely into housing.

* Parenthesis dimensions are in mm.

Base Part#: **06-MPB** XXXX XX X XX X

XXXX = BARREL LENGTH

1000 = 1" Barrel length
1500 = 1-1/2" Barrel length

XX = FINISHES

BC = Brushed Chrome 26 (Standard)
SB = Satin Brass 06
BL = Black 22
AB = Antique Brass 09
DB = Dark Bronze/ Clear Coat 24
PN = Polished Nickel 18

X = STAMP LOCK

S = Stamp lockface or lock
B = Blank (no stamping) (Standard)

XX = KEYING

KA = Keyed Alike
KD = Keyed Different
MA = Master-Keyed and Keyed Alike
MD = Master Keyed and Keyed Different

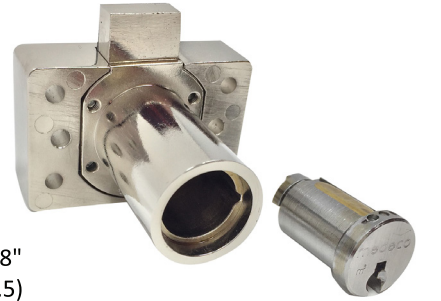
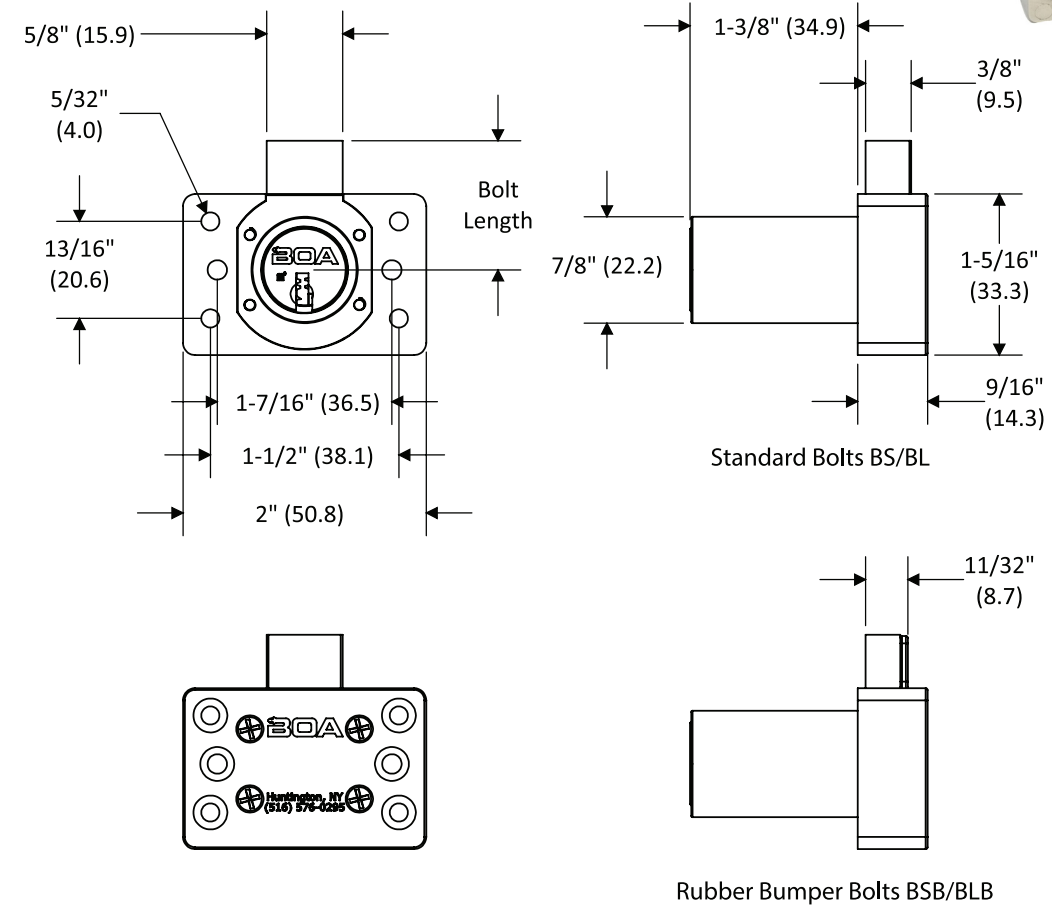
X = KEY REMOVES

1 = Locked Position Only (Standard)
2 = Locked and Unlocked Positions



DRAWER LOCKS: DEAD BOLT "PIT BULL"

REMOVABLE CORE



Base Part#: **07-MPB-1500** XX X XX X

XX = FINISHES

BC = Brushed Chrome 26 (Standard)
SB = Satin Brass 06
BL = Black 22
AB = Antique Brass 09
DB = Dark Bronze/ Clear Coat 24
PN = Polished Nickel 18

X = STAMP LOCK

S = Stamp lockface or lock
B = Blank (no stamping) (Standard)

XX = KEYING

KA = Keyed Alike
KD = Keyed Different
MA = Master-Keyed and Keyed Alike
MD = Master Keyed and Keyed Different

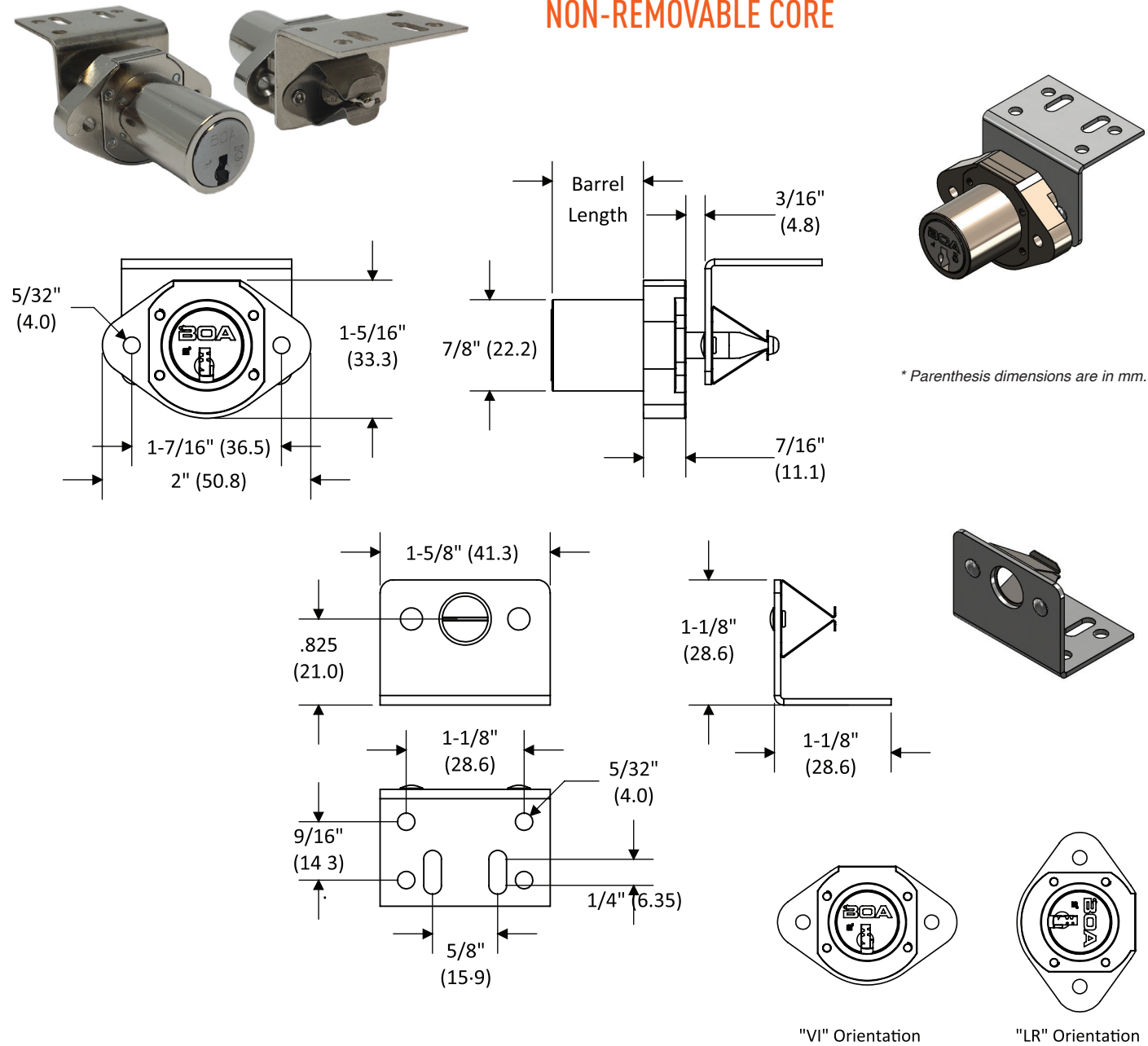
X = KEY REMOVES

1 = Locked Position Only (Standard)
2 = Locked and Unlocked Positions



DRAWER LOCKS: SNAP BOLT

NON-REMOVABLE CORE



Base Part#: **06-MSB** XXXX XX X XX

XXXX = BARREL LENGTH

1000 = 1" Barrel length
1500 = 1-1/2" Barrel length

XX = FINISHES

BC = Brushed Chrome 26 (Standard)
SB = Satin Brass 06
BL = Black 22
AB = Antique Brass 09
DB = Dark Bronze/ Clear Coat 24
PN = Polished Nickel
PN = Polished Nickel 18

X = STAMP LOCK

S = Stamp lockface or lock
B = Blank (no stamping) (Standard)

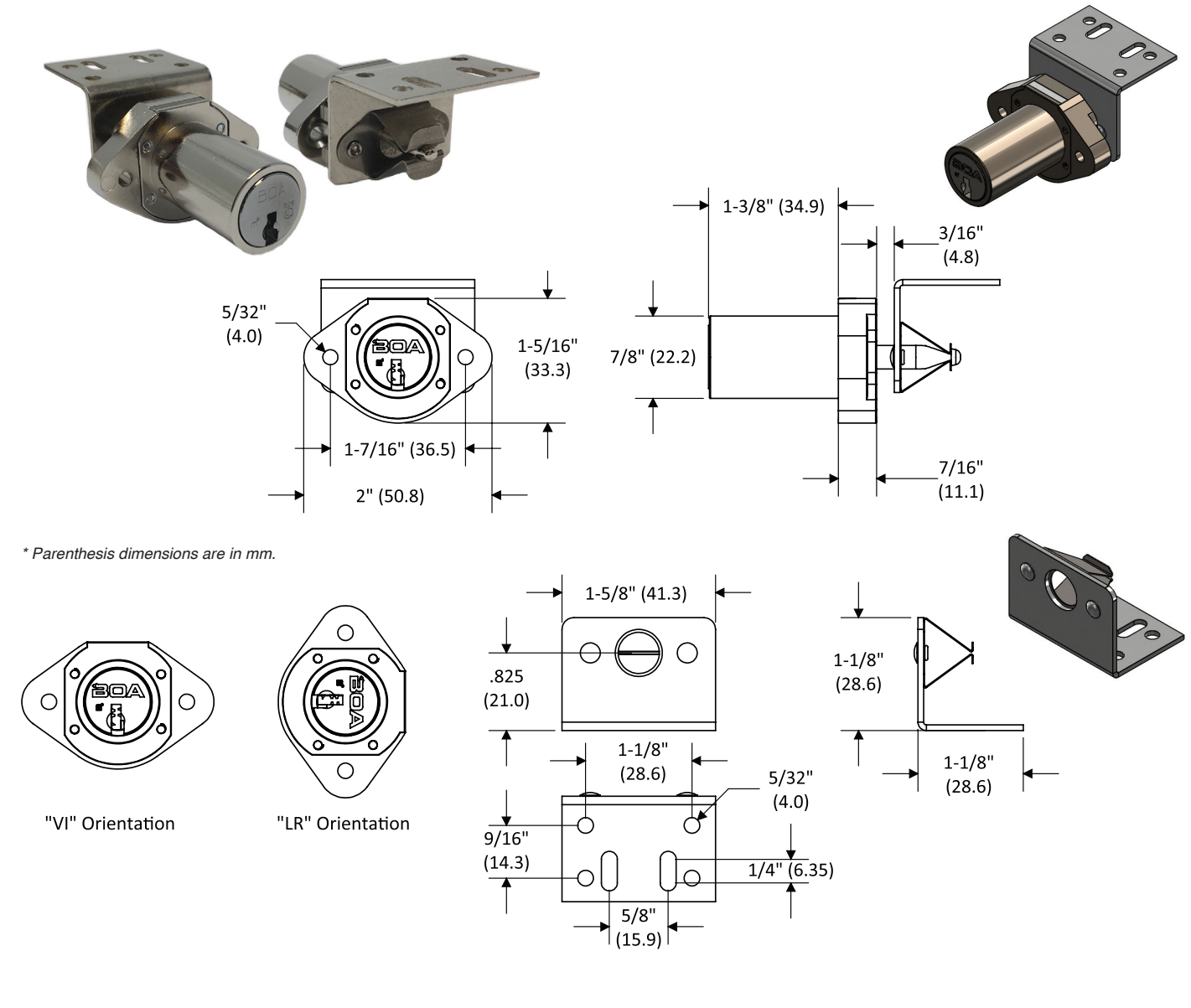
XX = KEYING

KA = Keyed Alike
KD = Keyed Different
MA = Master-Keyed and Keyed Alike
MD = Master Keyed and Keyed Different

DRAWER LOCKS: SNAP BOLT

REMOVABLE CORE

Only Available in Key Retaining



Base Part#: **07-MSB-1500** XX X XX

XX = FINISHES

BC = Brushed Chrome 26 (Standard)
SB = Satin Brass 06
BL = Black 22
AB = Antique Brass 09
DB = Dark Bronze/ Clear Coat 24
PN = Polished Nickel 18

X = STAMP LOCK

S = Stamp lockface or lock
B = Blank (no stamping)
(Standard)

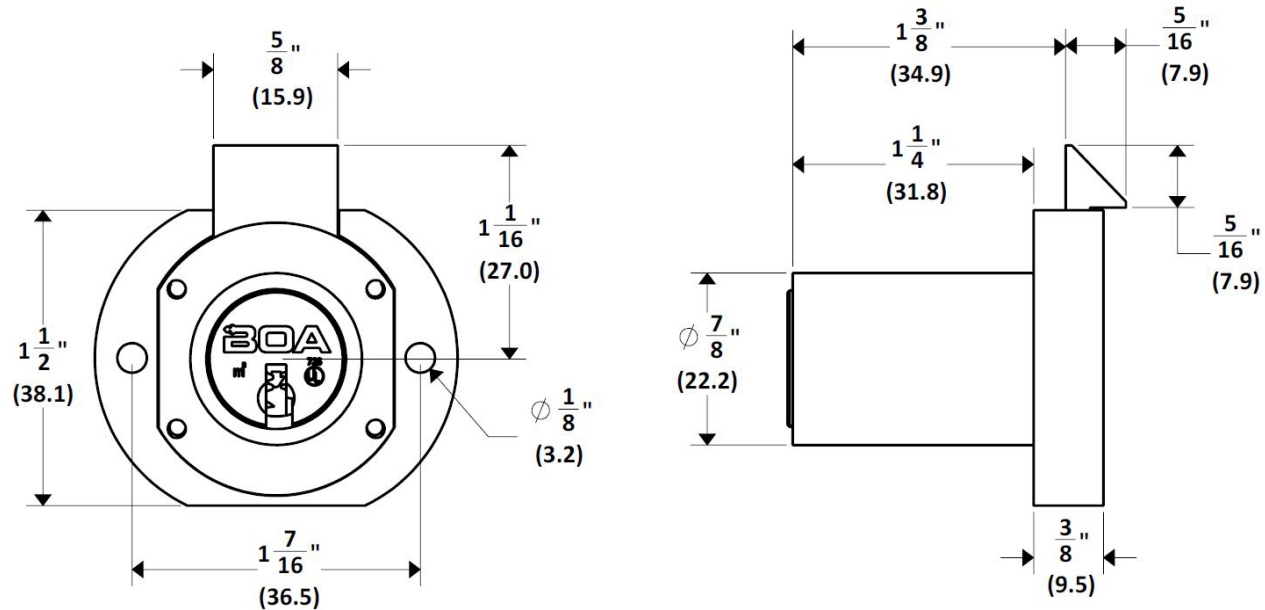
XX = KEYING

KA = Keyed Alike
KD = Keyed Different
MA = Master-Keyed and Keyed Alike
MD = Master Keyed and Keyed Different

DRAWER LOCKS: SPRING BOLT

NON-REMOVABLE CORE

NOTE:
Products pictured in the locked position
Nominal Bolt travel is 11/32" (8.7 mm)



* Parenthesis dimensions are in mm.

Base Part#: **06-MSPR-1250 XX X XX**

XX = FINISHES

BC = Brushed Chrome 26 (Standard)
SB = Satin Brass 06
BL = Black 22
AB = Antique Brass 09
DB = Dark Bronze/ Clear Coat 24
PN = Polished Nickel 18

X = STAMP LOCK

S = Stamp lockface or lock
B = Blank (no stamping) (Standard)

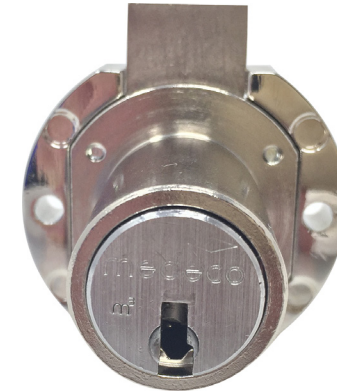
XX = KEYING

KA = Keyed Alike
KD = Keyed Different
MA = Master-Keyed and Keyed Alike
MD = Master Keyed and Keyed Different

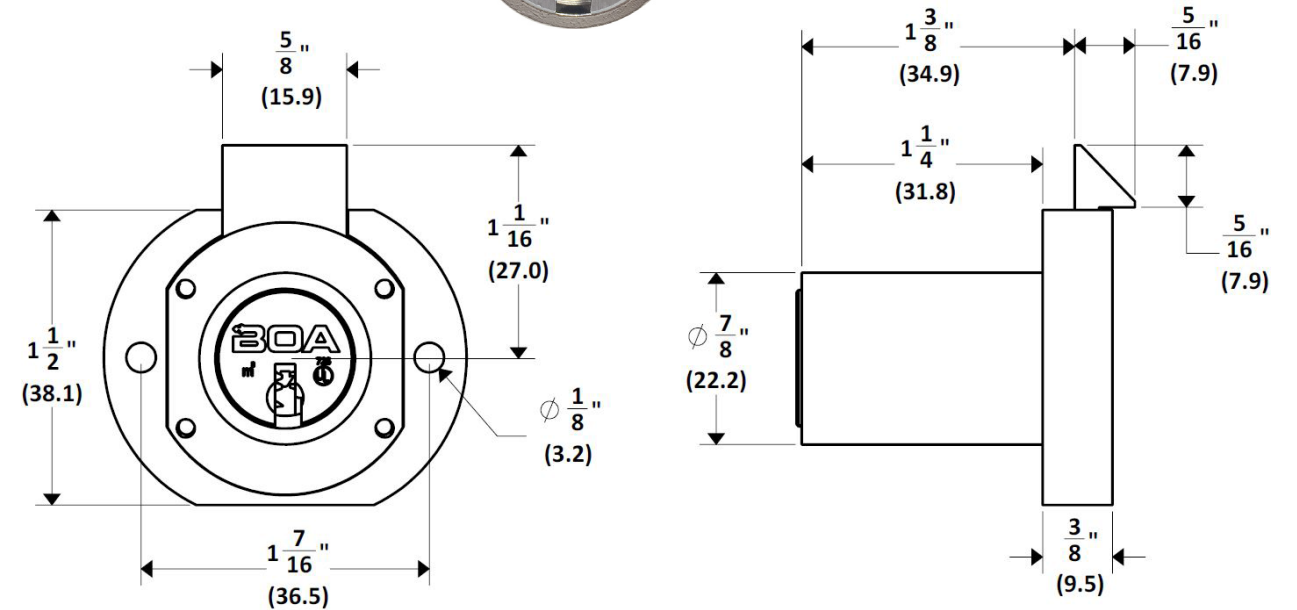
DRAWER LOCKS: SPRING BOLT

REMOVABLE CORE

Only Available in Key Retaining



NOTE:
Products pictured in the locked position
Nominal Bolt travel is 11/32" (8.7 mm)



* Parenthesis dimensions are in mm.

Base Part#: **07-MSPR-1250 XX X XX**

XX = FINISHES

BC = Brushed Chrome 26 (Standard)
SB = Satin Brass 06
BL = Black 22
AB = Antique Brass 09
DB = Dark Bronze/ Clear Coat 24
PN = Polished Nickel 18

X = STAMP LOCK

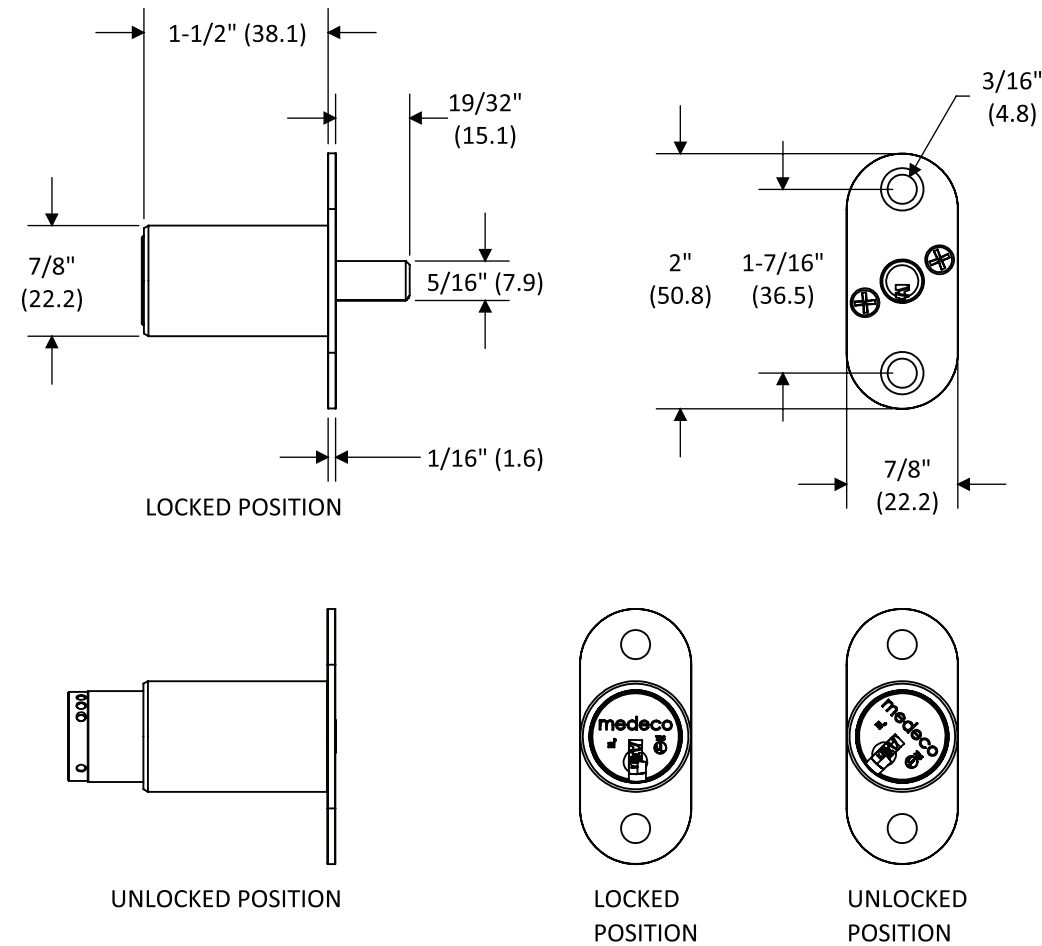
S = Stamp lockface or lock
B = Blank (no stamping) (Standard)

XX = KEYING

KA = Keyed Alike
KD = Keyed Different
MA = Master-Keyed and Keyed Alike
MD = Master Keyed and Keyed Different

PLUNGER LOCK

NON-REMOVABLE CORE



* Parenthesis dimensions are in mm.

Base Part#: **06-MPL** XX X XX X

XX = FINISHES

BC = Brushed Chrome 26 (Standard)
SB = Satin Brass 06
BL = Black 22
AB = Antique Brass 09
DB = Dark Bronze/ Clear Coat 24
PN = Polished Nickel 18

X = STAMP LOCK

S = Stamp lockface or lock
B = Blank (no stamping) (Standard)

XX = KEYING

KA = Keyed Alike
KD = Keyed Different
MA = Master-Keyed and Keyed Alike
MD = Master Keyed and Keyed Different

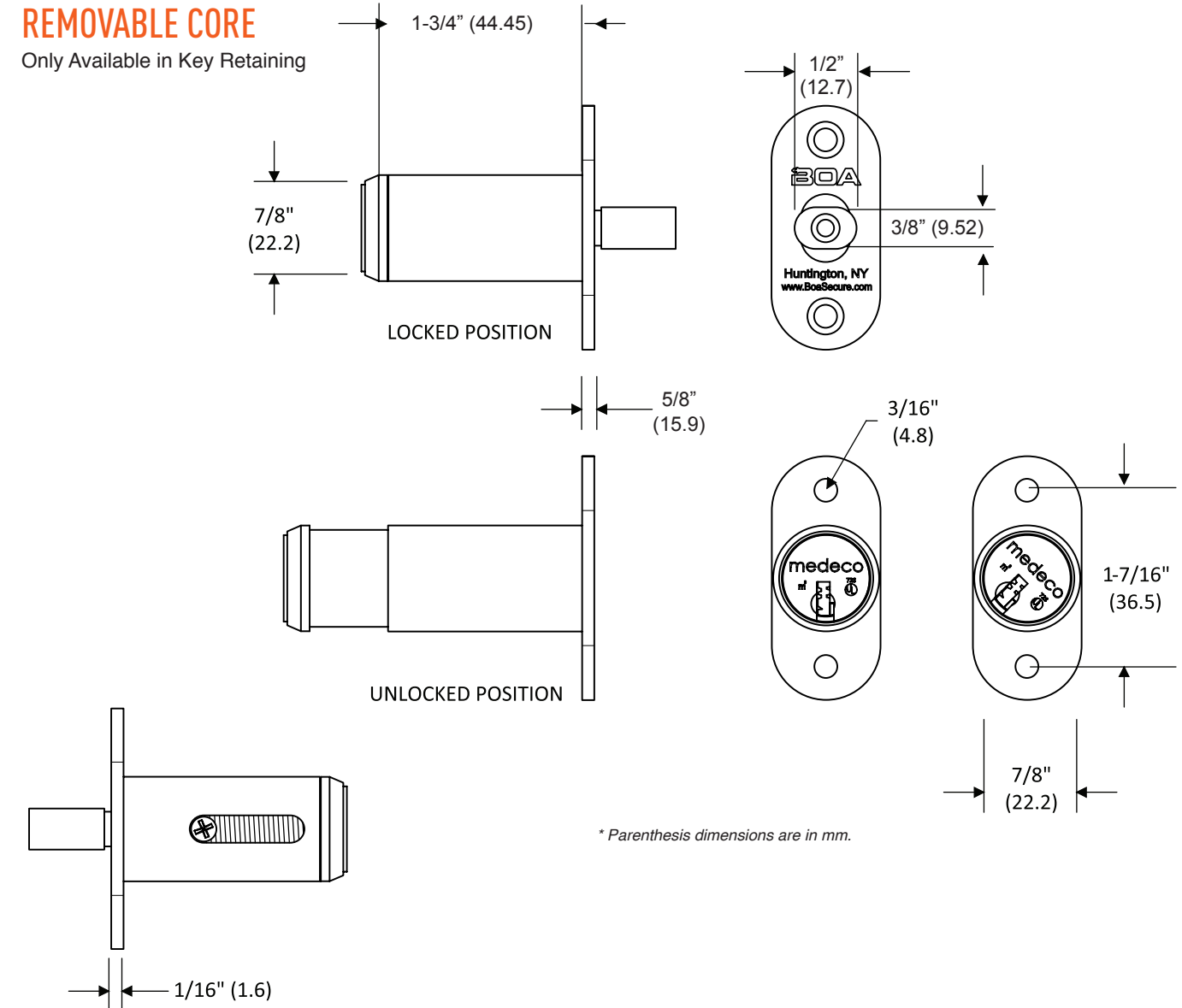
X = KEY REMOVES

1 = Locked Position Only (Standard)
2 = Locked and Unlocked Positions

PLUNGER LOCK

REMOVABLE CORE

Only Available in Key Retaining



* Parenthesis dimensions are in mm.

Base Part#: **07-MPL** XX X XX

XX = FINISHES

BC = Brushed Chrome 26 (Standard)
SB = Satin Brass 06
BL = Black 22
AB = Antique Brass 09
DB = Dark Bronze/ Clear Coat 24
PN = Polished Nickel 18

X = STAMP LOCK

S = Stamp lockface or lock
B = Blank (no stamping) (Standard)

XX = KEYING

KA = Keyed Alike
KD = Keyed Different
MA = Master-Keyed and Keyed Alike
MD = Master Keyed and Keyed Different

06-KEY-OP - NON REMOVABLE CORE KEY

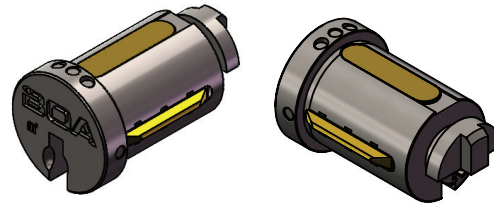
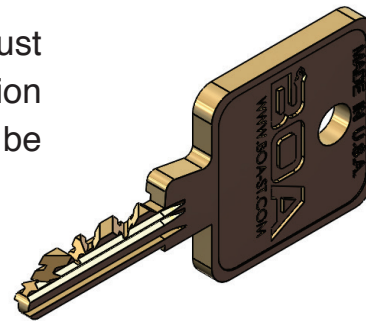
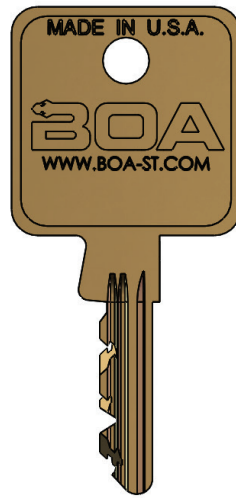
07-KEY-OP - REMOVABLE CORE OPERATING KEY

**07-KEY-CTL - REMOVABLE CORE CONTROL KEY
(USED TO REMOVE CORES)**

BOA Security Technologies offers Medeco® Biaxial and Medeco3® key technology. Restricted keyways are available which offer another layer of protection.

All Medeco® keys purchased through BOA must be registered with an authorized identification and signature on file. Additional keys can only be purchased with this authorization credential.

Note removable core operating keys are 5-pin and the control key is 4-pin. Removable core products can not be mixed with standard Medeco products.



NOTES



BOA SECURITY TECHNOLOGIES

586 New York Avenue, Unit 3

Huntington, NY 11743

T 516-576-0295 | F 631-470-8099

Alan.Lurie@BOA-ST.com

www.BoaSecure.com
