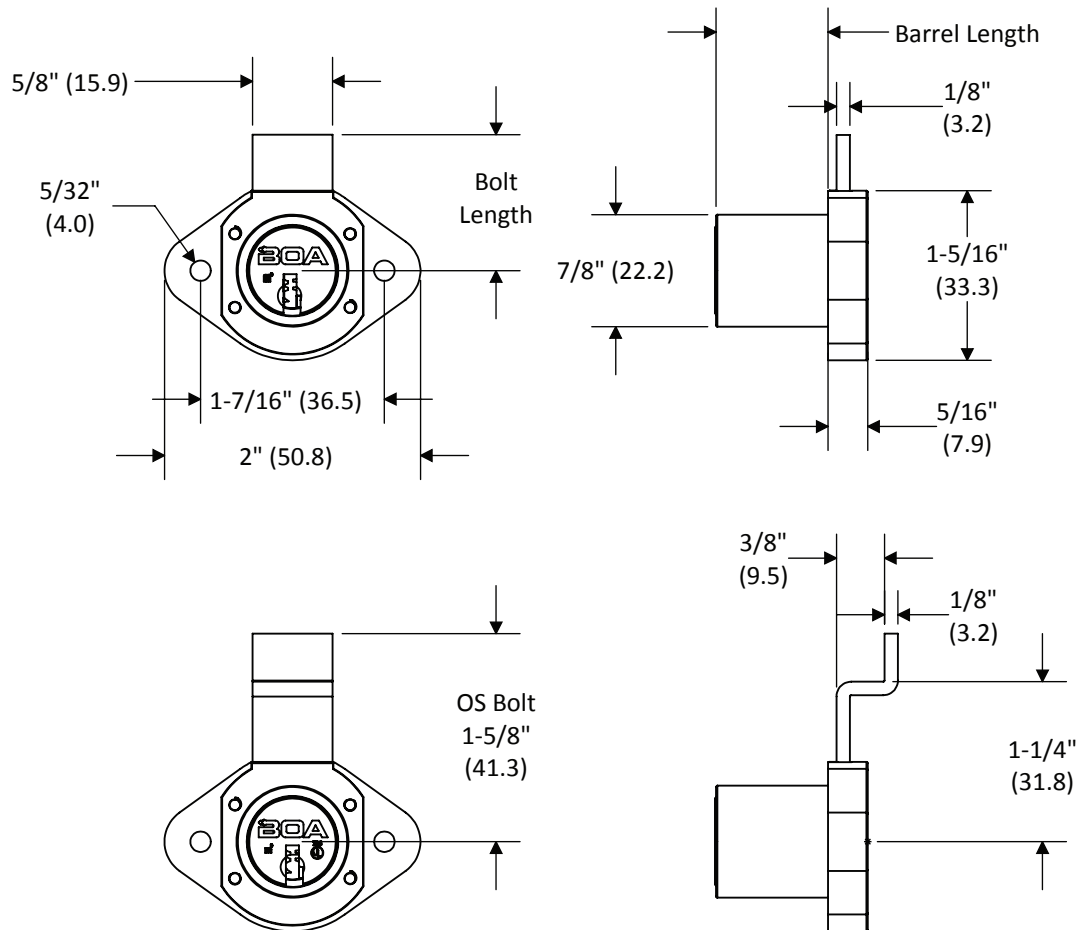


NOTE:

Products pictured in the locked position
Nominal Bolt travel is 7/16" (11.1 mm)
Short bolt (BS) option retracts completely into housing.



All dimensions are nominal. For best fit call for a sample.
Dual-Dimensions in parentheses are in millimeter (mm).

Part Number

K -DB- **BL** - **B** - **P** -
KO - **M** - **F**

KEYWAY K

- 01** – Medeco® m³
- 02** – Medeco® CA
- 06** – BOA Restricted

BARREL LENGTH BL

- S** – 7/8" (22.2mm)
- L** – 1-3/8" (34.9mm)

BOLT TYPE B

- BS** – 1-1/16" (27.0 mm)
- BL** – 1-11/16" (42.9 mm)
- BXL** – 3-1/8" (79.4 mm)
- OS** – 3/8" (9.5 mm) Offset Bolt

KEY PULLS P

- C** – Captive Key Retaining (90° Rotation Only)
- N** – Non-Captive 2 Key Pulls (180° Rotation Only)

KEYED OPTION KO

- A** – Keyed Alike
- D** – Keyed Different

MASTER M

- N** – Non-Master
- M** – Single Level Master

FINISH F

- PN** - Polished Nickel
- SC** - Satin Chrome (US26D)
- CF** - Custom Finish (See Finish Page)

Medeco Dead Bolt "BULLDOG" Drawer Lock*

*Patent Pending

Part Number

K -BD- **BL** - **B** - **P** -
KO - **M** - **F**

KEYWAY **K**

- 01** – Medeco® m³
- 02** – Medeco® CA
- 06** – BOA Restricted

BARREL LENGTH **BL**

- S** – 7/8" (22.2mm)
- L** – 1-3/8" (34.9mm)

BOLT TYPE **B**

- BS** – 1-1/16" (27.0 mm)
- BL** – 1-11/16" (42.9 mm)
- BSB** – 1-1/16" (27.0 mm)
with Rubber Bumper
- BLB** – 1-11/16" (42.9 mm)
with Rubber Bumper

KEY PULLS **P**

- C** – Captive Key Retaining
(90° Rotation Only)
- N** – Non-Captive 2 Key Pulls
(180° Rotation Only)

KEYED OPTION **KO**

- A** – Keyed Alike
- D** – Keyed Different

MASTER **M**

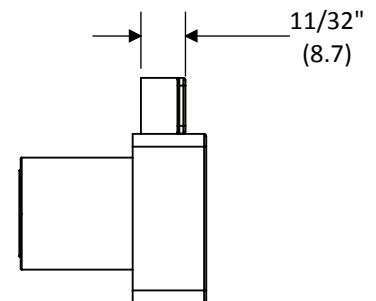
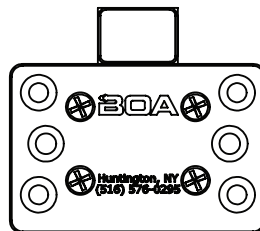
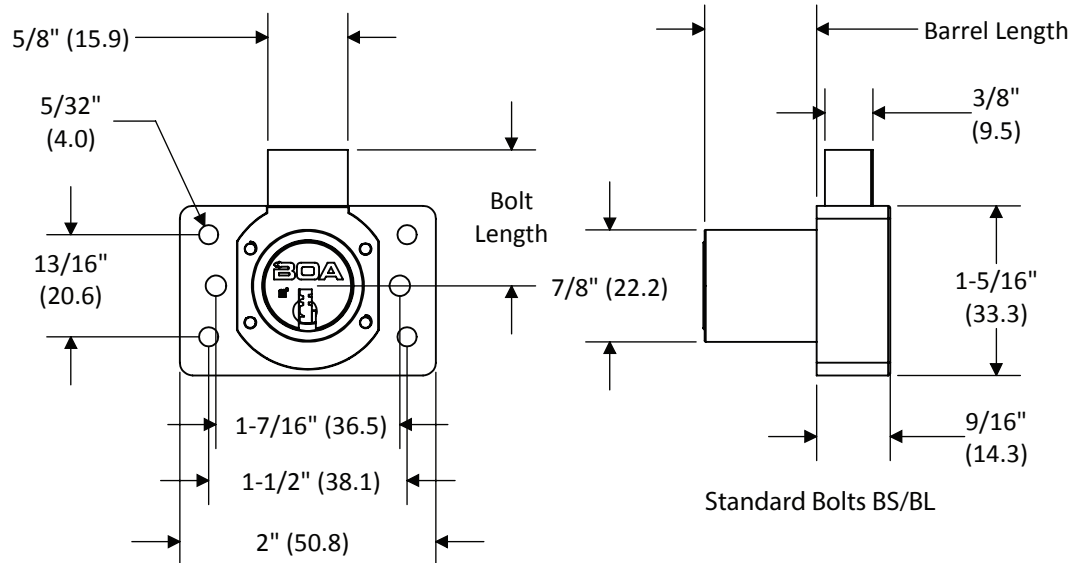
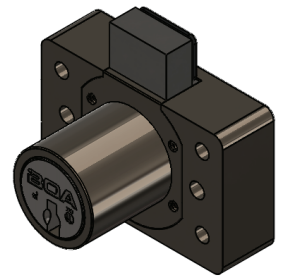
- N** – Non-Master
- M** – Single Level Master

FINISH **F**

- PN** - Polished Nickel
- SC** - Satin Chrome (US26D)
- CF** - Custom Finish (See Finish Page)

NOTE:

Products pictured in the locked position
Nominal Bolt travel is 7/16" (11.1 mm)
Short bolt (BS & BSB) options retract
completely into housing.



All dimensions are nominal. For best fit call for a sample.
Dual-Dimensions in parentheses are in millimeter (mm).